

www.openjarstudios.com

EVENT SPACES

at



Technical Specifications and Venue Information

CONTACT:

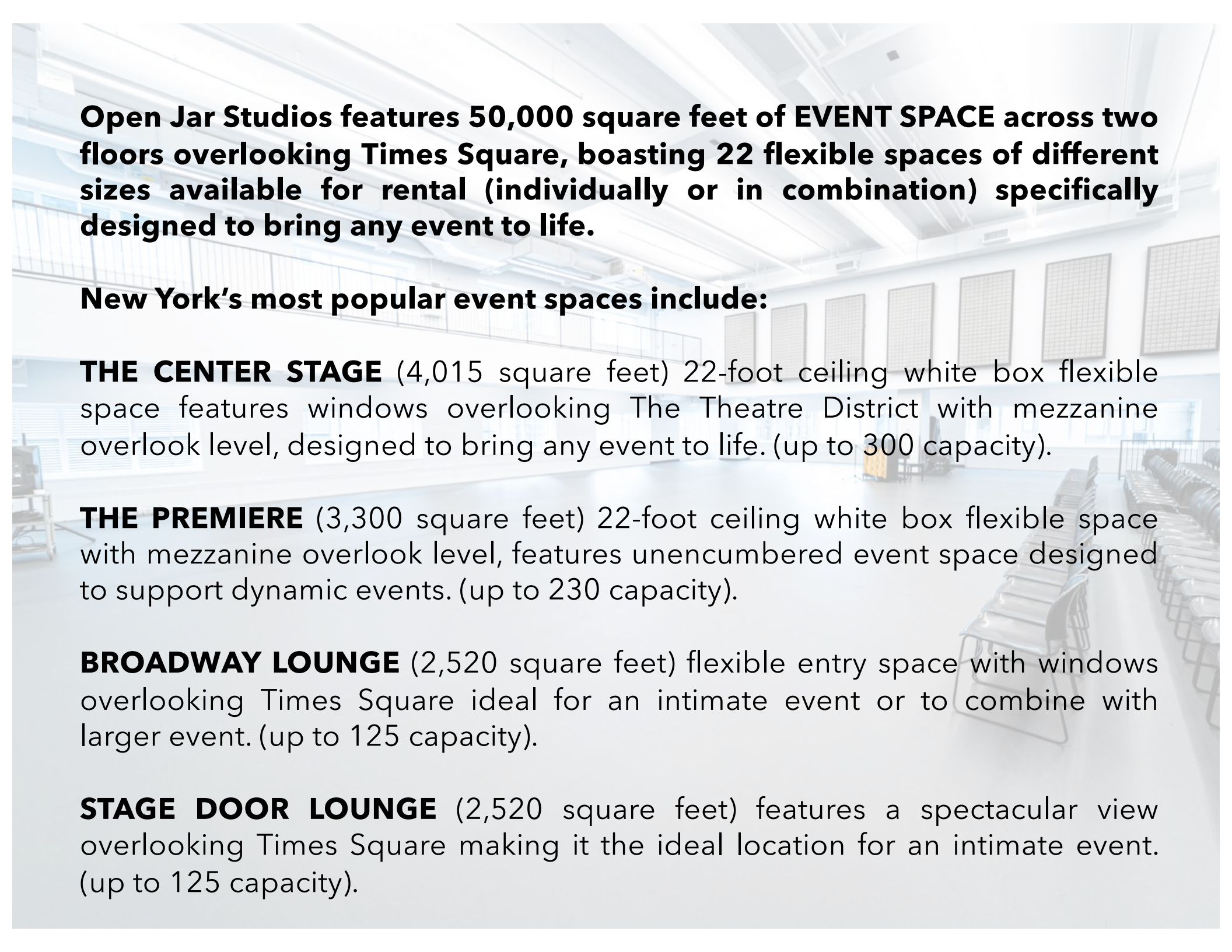
SALES COORDINATOR:

Hugh Hysell

T: 212-582-1417

E: hugh.hysell@openjarstudios.com

Booking Inquiries



Open Jar Studios features 50,000 square feet of EVENT SPACE across two floors overlooking Times Square, boasting 22 flexible spaces of different sizes available for rental (individually or in combination) specifically designed to bring any event to life.

New York's most popular event spaces include:

THE CENTER STAGE (4,015 square feet) 22-foot ceiling white box flexible space features windows overlooking The Theatre District with mezzanine overlook level, designed to bring any event to life. (up to 300 capacity).

THE PREMIERE (3,300 square feet) 22-foot ceiling white box flexible space with mezzanine overlook level, features unencumbered event space designed to support dynamic events. (up to 230 capacity).

BROADWAY LOUNGE (2,520 square feet) flexible entry space with windows overlooking Times Square ideal for an intimate event or to combine with larger event. (up to 125 capacity).

STAGE DOOR LOUNGE (2,520 square feet) features a spectacular view overlooking Times Square making it the ideal location for an intimate event. (up to 125 capacity).



Times Square Event Space

With stunning views overlooking Times Square, this flexible white box space on 48th Street and Broadway provides a blank canvas to bring your event to life.

Our marquis 4,015 square foot space features 22' ceilings and large windows overlooking The Theatre District, providing limitless possibilities for cocktail receptions, corporate meetings, seated dinners, and more.

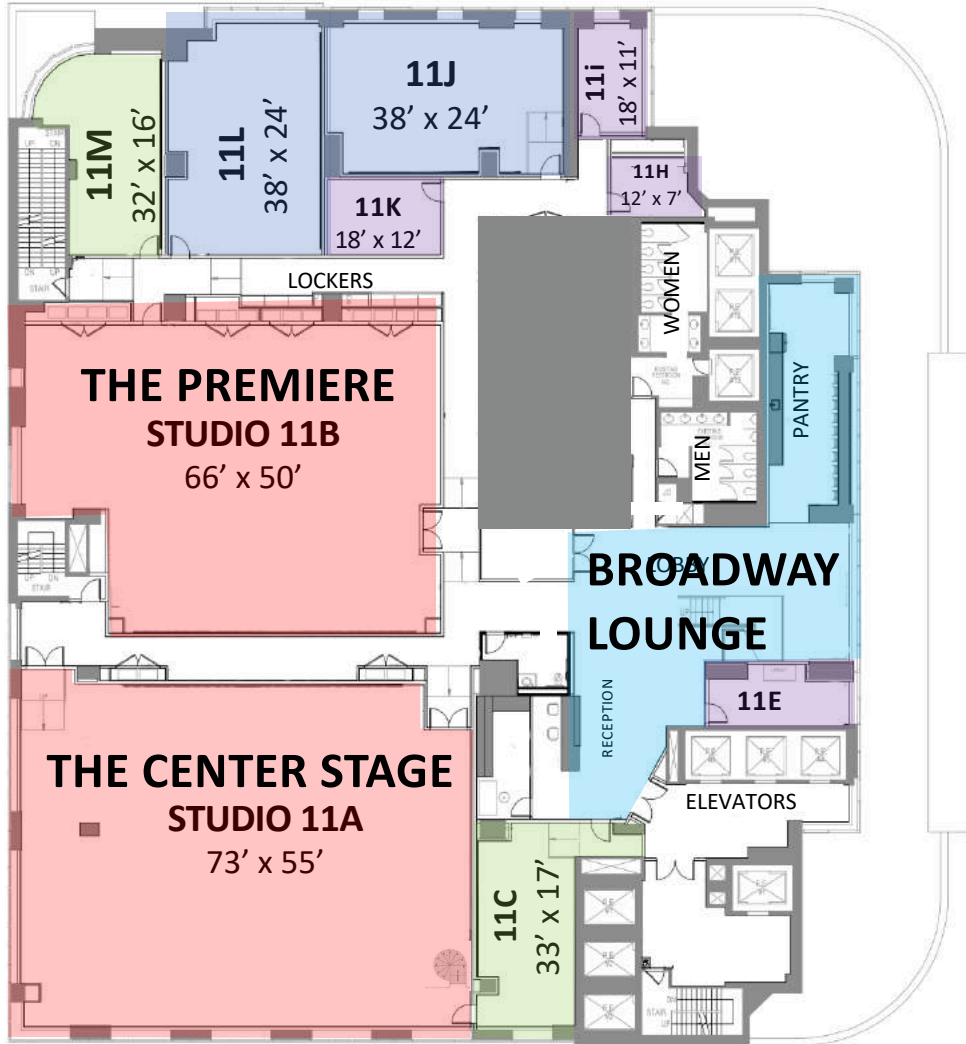
The studio complex boasts 22 flexible spaces of differing sizes across 50,000/sf, which can be combined to create the ideal venue for your photo shoot, off-site meeting, conference, or networking event.

Used regularly for Broadway rehearsals space and as a studio for photography and film the space is available for any type of event imaginable.

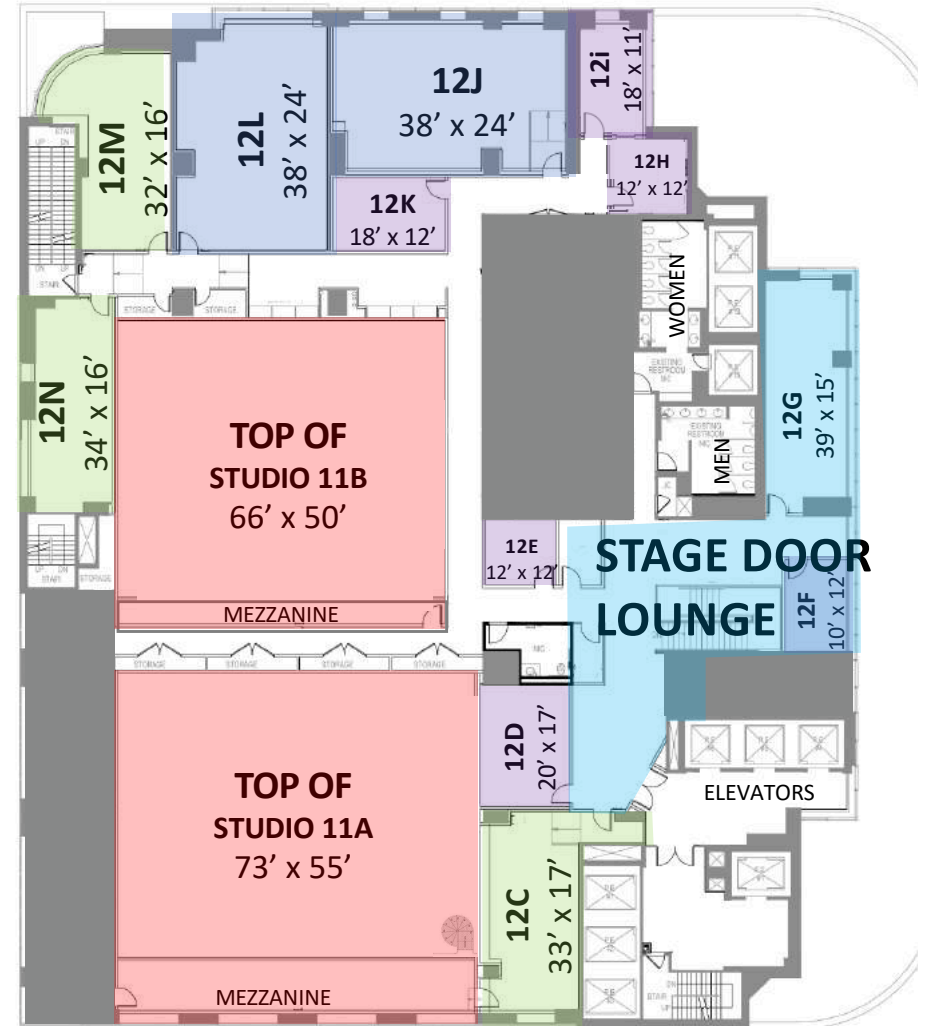
**1601 Broadway - 11th & 12th Floor
New York, NY 10019**



11th Floor



12th Floor



2 EXTRA LARGE STUDIOS:

CENTERSTAGE - 11A: 4,015/sf - 22' high ceiling, Mezzanine /Spiral Staircase

PREMIERE - 11B: 3,300/sf - 22' high ceiling Mezzanine Level overlook

4 LARGE STUDIOS:

912/sf - 11' high ceiling

6 MEDIUM STUDIOS:

550/sf - 11' high ceiling

10 SMALL STUDIOS:

200/sf - 11' high ceiling

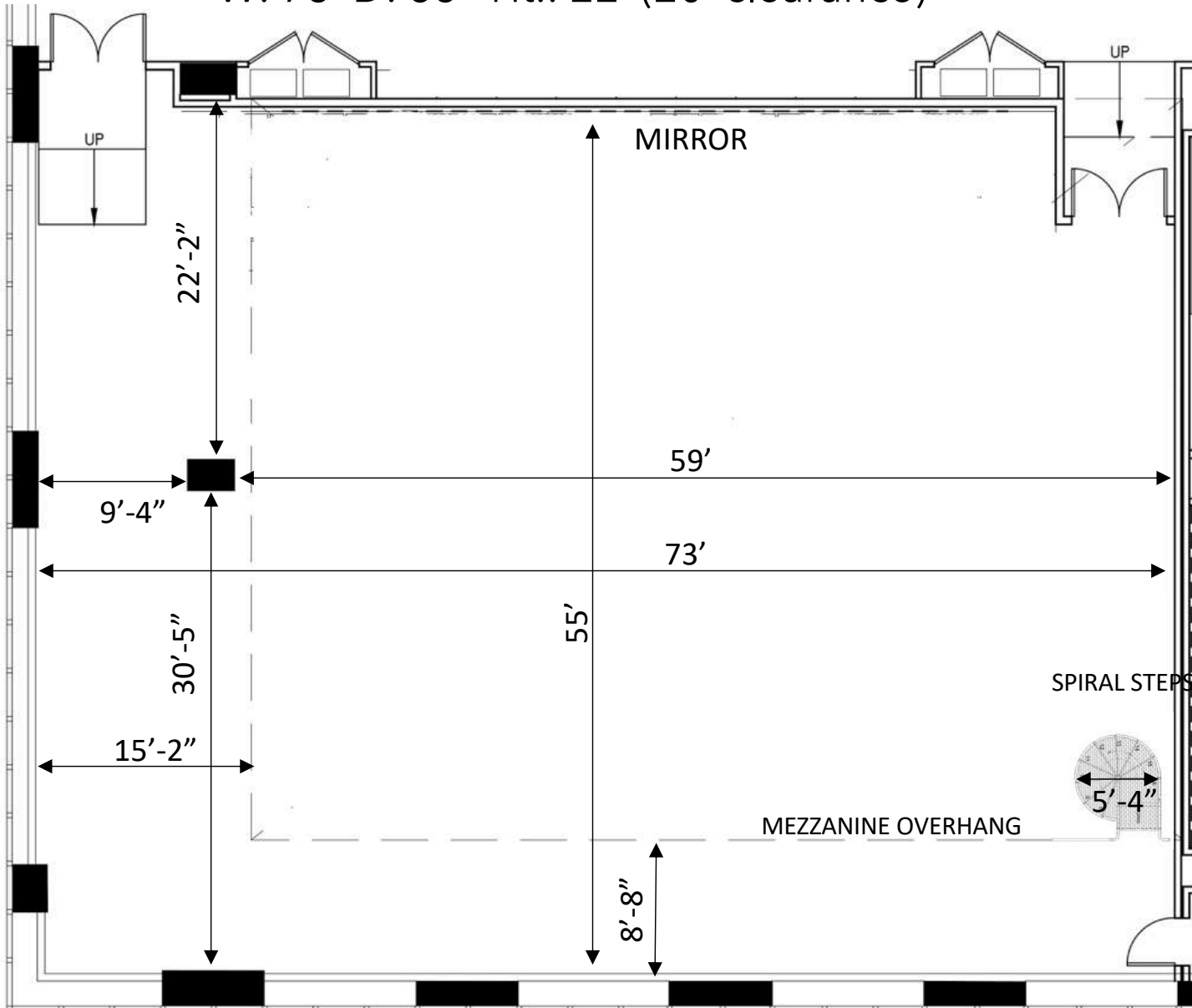
BROADWAY/STAGE DOOR LOUNGE:

2,520/sf - 11' high ceiling

THE CENTER STAGE

STUDIO 11A (4,015/sf)

W: 73' D: 55' Ht.: 22' (20' clearance)



THE CENTER STAGE - STUDIO 11A 73' x 55'



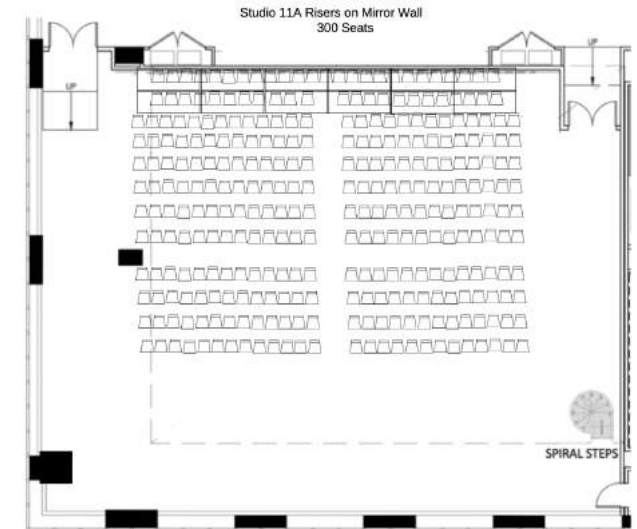
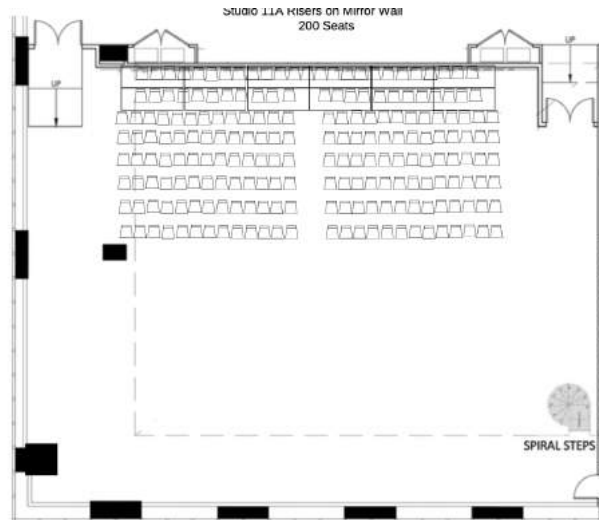
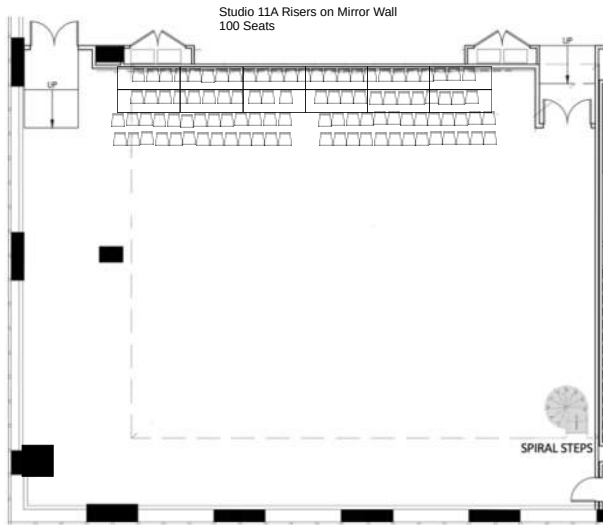
Theater Set Up
Capacity: 100



Theater Set Up
Capacity: 200



Theater Set Up
Capacity: 300



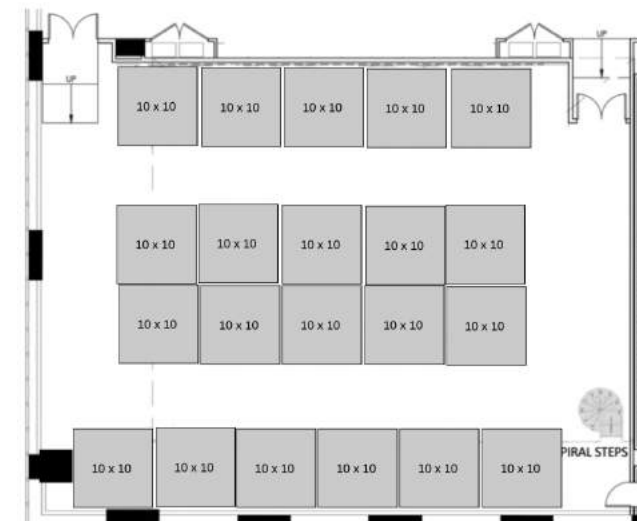
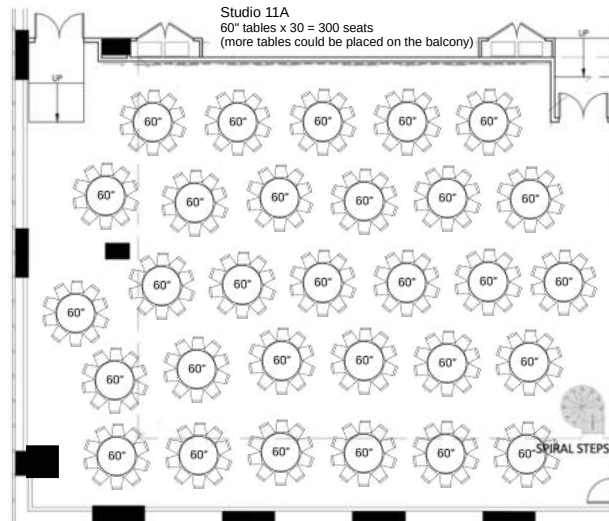
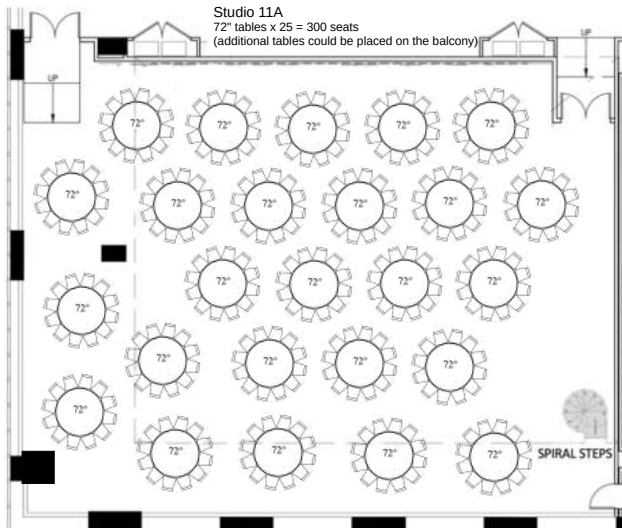
72" tables x 25
Capacity: 300



60" tables x 30
Capacity: 300



Trade Show: 10 x 10
Capacity: 300



THE CENTER STAGE

STUDIO 11A (4,015/sf)

TECH SPECS

STUDIO 11A: W: 73' D: 55' Ht.: 22' (20' clearance)

Sprung dance floor with vinyl surface.

Studio length mirrors

Upright piano

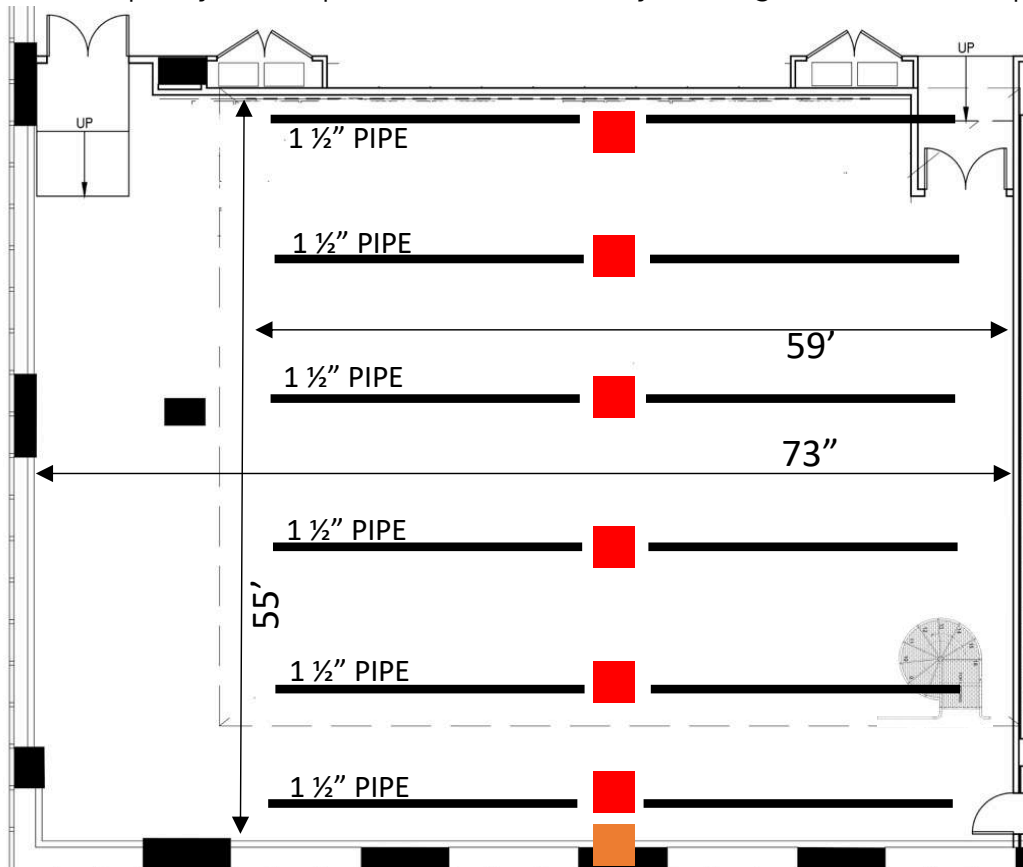
Mezzanine overlook with spiral stair access

Individually climate controlled

Private WiFi for package rental.

Sound-attenuated studios.

Occupancy: 125 (up to 300 attendees by holding other rooms empty).



Sound Support:

2 1100W 12" Yamaha DXR12 speaker on TeleLock Tripod stand

Mixer: 12-channel Yamaha MG-12XU with USB.

2 wired SM58 Microphones

2 boom microphone stands

Off street-loading dock: 30-foot box truck (12.5' high) takes elevator to basement of building to unload, then transfer materials to freight elevator to transport to floor.

Truck Elevator (L:38.5' W:11.5' Ht:13.5') Available 24/7 (to be scheduled with the management).

Freight Elevator:

Inside dimensions: 76"(w) x 65" (d) x 9'6" (ht). (325 cubic feet)

Door opening: 41.5" (w) x 7" high.

Power/Ceiling Grid:

Pipe grid for static hangs (1 1/2" pipe) with power on each pipe. Each pipe holds up to 300 LBS.

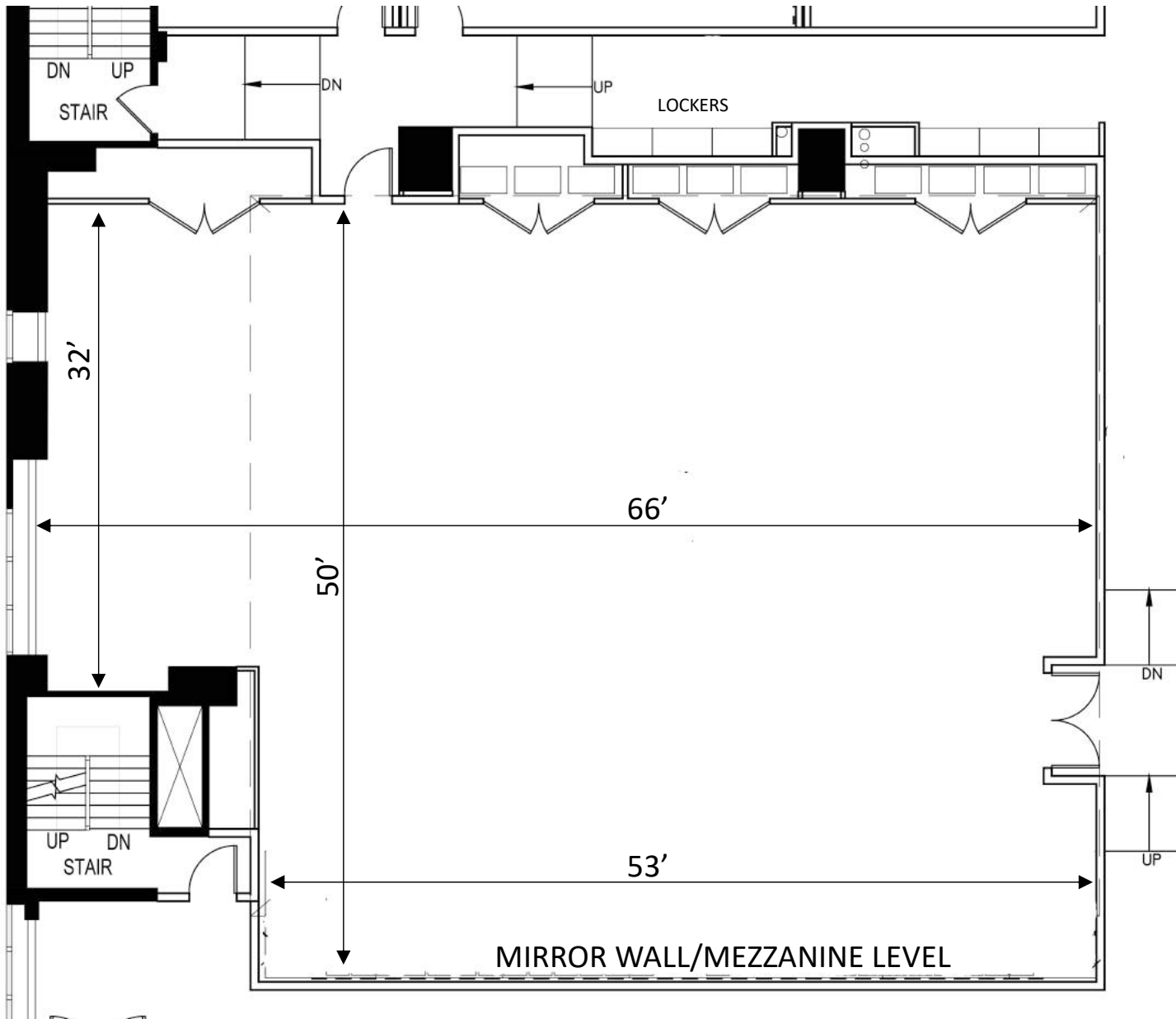
————— 1 1/2" PIPE FOR STATIC HANGS UP TO 300 LBS.

- 20AMP STUDIO CEILING POWER CONNECTIONS
MFR: ETC.
MODEL #: 98048 W/ RACO BACK BOX PART #693
4 STAGE PIN CONNECTOR PER LOCATION ON 2 CIRCUITS
- POWERGATE 200 AMP COMPANY SWITCH
MODEL #: CS-200F-C60Si

THE PREMIERE

STUDIO 11B (3,300/sf)

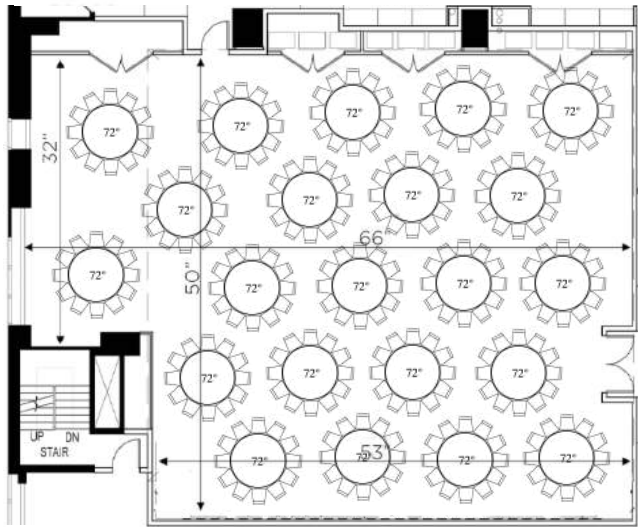
W: 66' D: 50' Ht.: 22' (20' clearance)



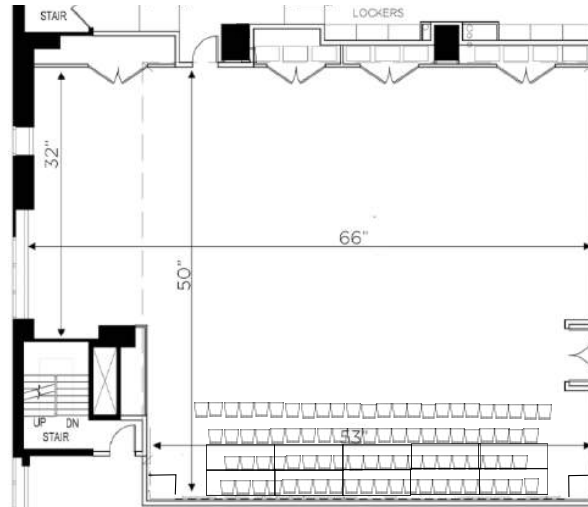
THE PREMIERE - STUDIO 11B: 66' x 50'



72" tables x 22
Capacity: 264



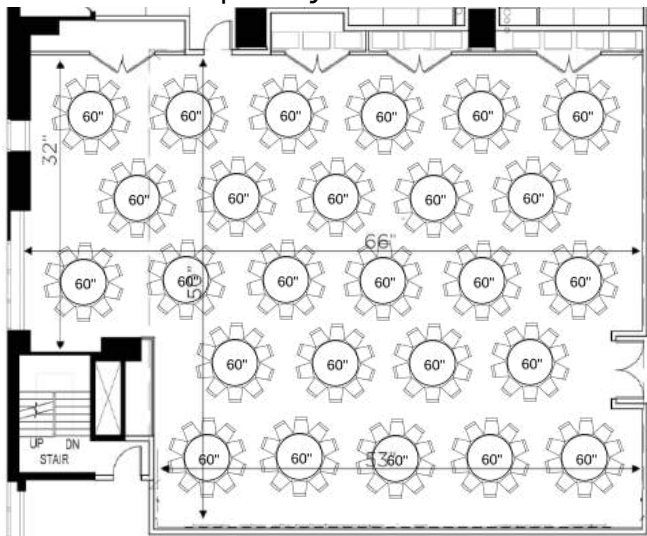
Theater Set Up
Capacity: 100



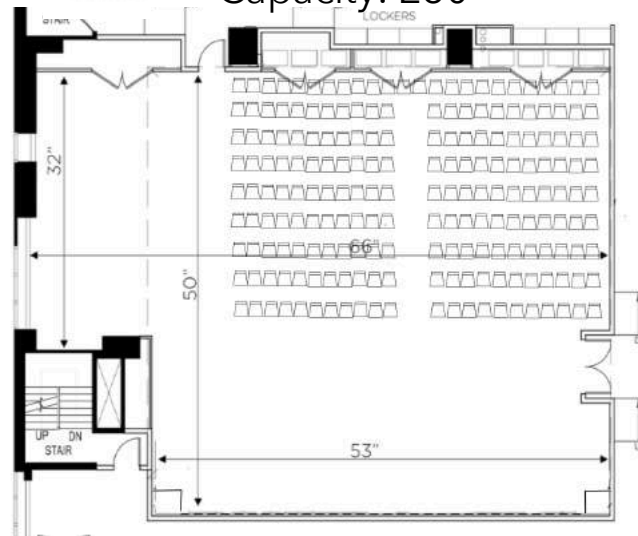
Trade Show: 10 x 10
Capacity: 230



60" tables x 26 tables
Capacity: 260



Theater Set Up
Capacity: 230



THE PREMIERE STUDIO 11B (3,300/sf) TECH SPECS

STUDIO 11B: W: 66' D: 50' Ht.: 22' (20' clearance)

Sprung dance floor with vinyl surface.

Studio length mirrors

Upright piano

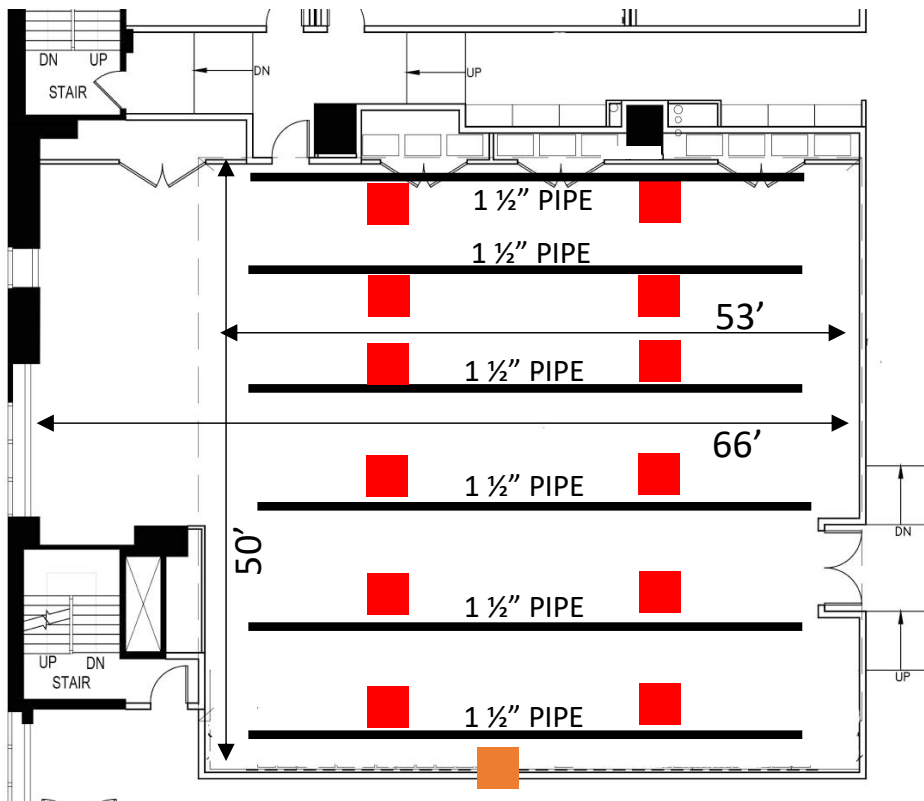
Mezzanine overlook with spiral stair access

Individually climate controlled

Private WiFi for package rental.

Sound-attenuated studios.

Occupancy: 125 (up to 230 attendees by holding other rooms empty).



Sound Support:

2 1100W 12" Yamaha DXR12 speaker on TeleLock Tripod stand

Mixer: 12-channel Yamaha MG-12XU with USB.

2 wired SM58 Microphones

2 boom microphone stands

Off street-loading dock: 30-foot box truck (12.5' high) takes elevator to basement of building to unload, then transfer materials to freight elevator to transport to floor.

Truck Elevator (L:38.5' W:11.5' Ht:13.5') Available 24/7 (to be scheduled with the management).

Freight Elevator:

Inside dimensions: 76"(w) x 65" (d) x 9'6" (ht). (325 cubic feet)

Door opening: 41.5" (w) x 7" high.

Power/Ceiling Grid:

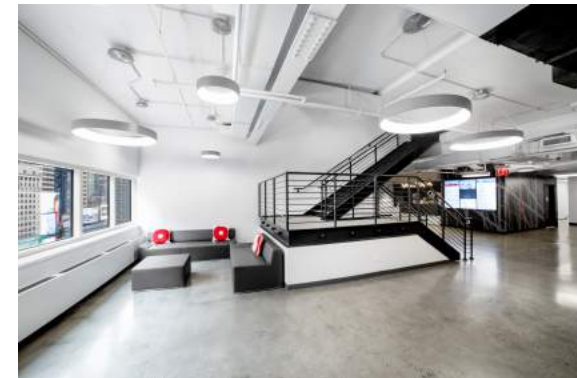
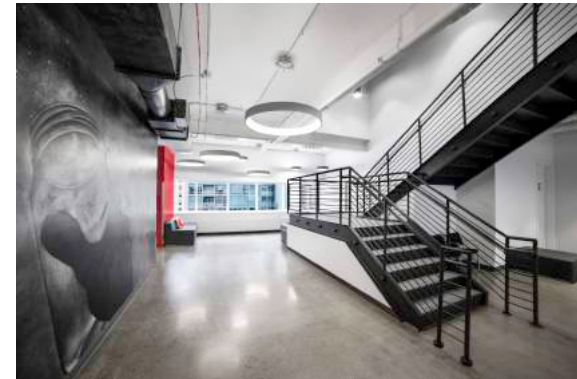
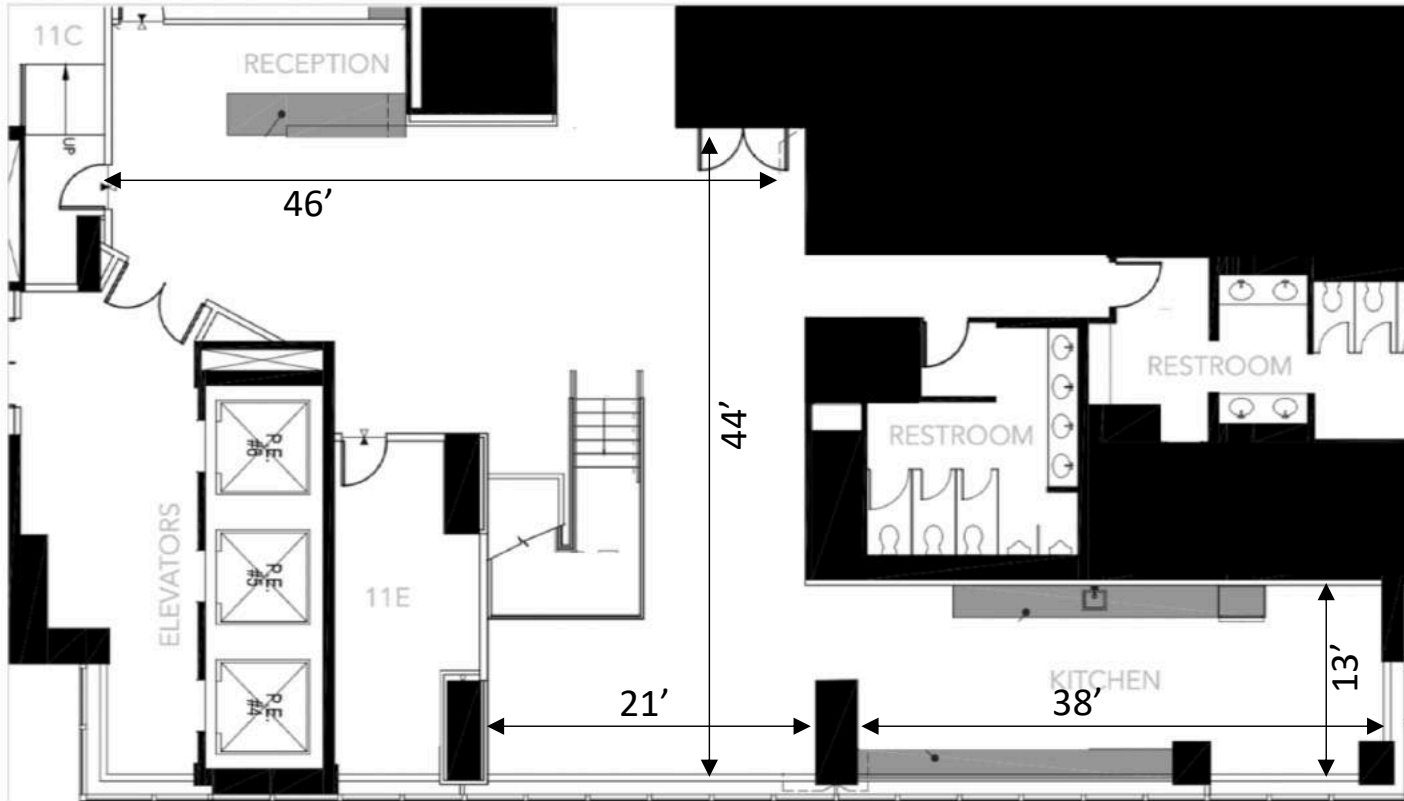
Pipe grid for static hangs (1 1/2" pipe) with power on each pipe. Each pipe holds up to 600 LBS.

————— 1 1/2" PIPE FOR STATIC HANGS UP TO 600 LBS.

- 20AMP STUDIO CEILING POWER CONNECTIONS
MFR: ETC.
MODEL #: 98048 W/ RACO BACK BOX PART #693
2 STAGE PIN CONNECTOR PER LOCATION ON 1 CIRCUIT
- POWERGATE 200 AMP COMPANY SWITCH
MODEL #: CS-200F-C60Si

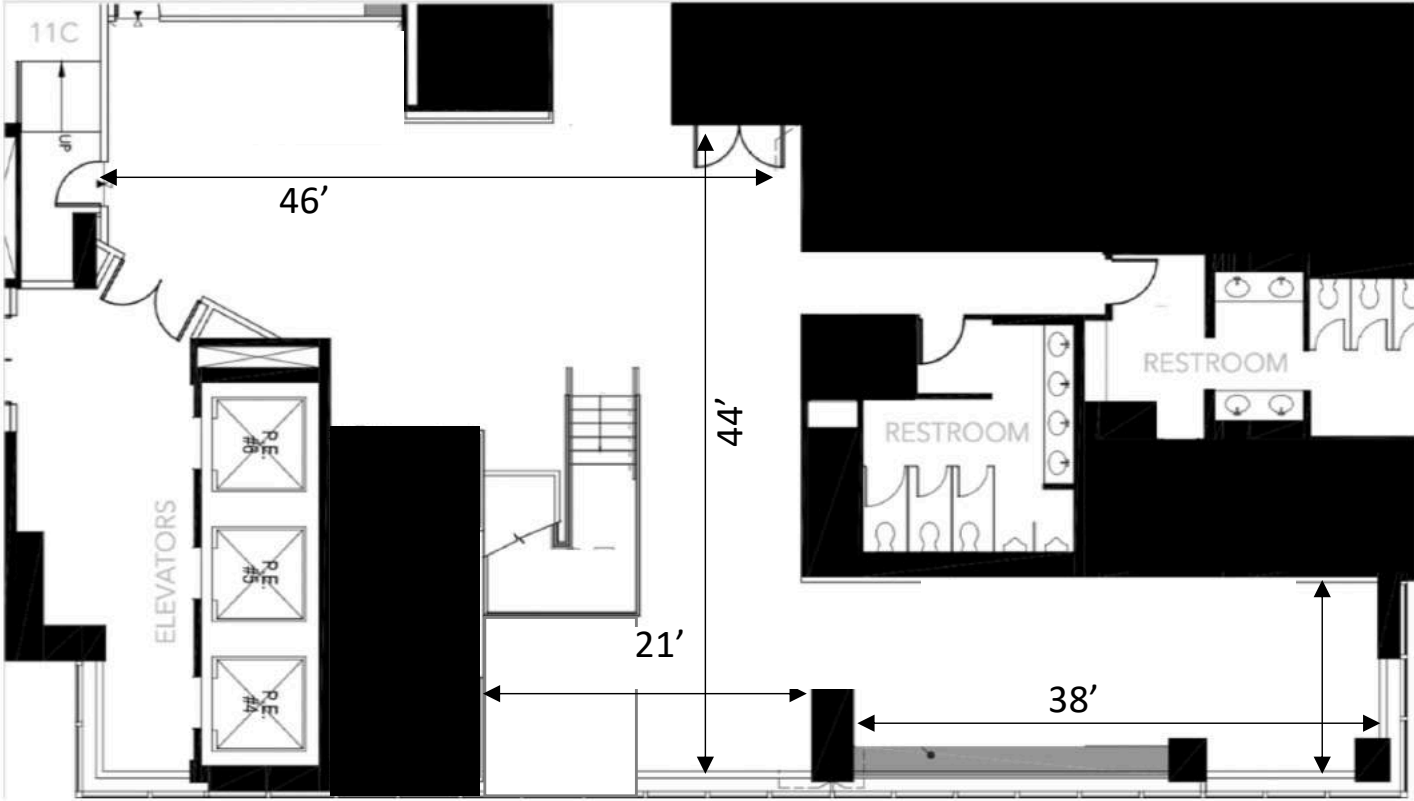
THE BROADWAY LOUNGE

2,520 square feet

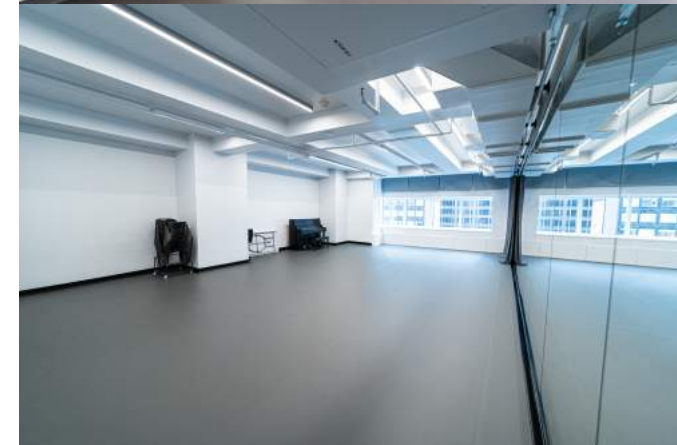
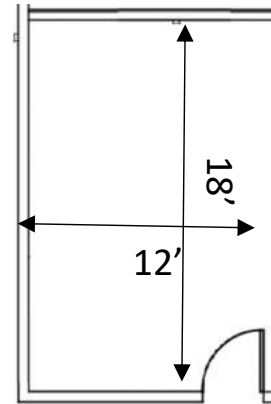
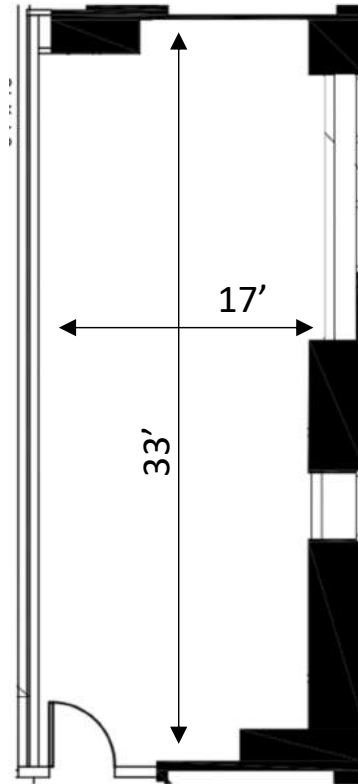
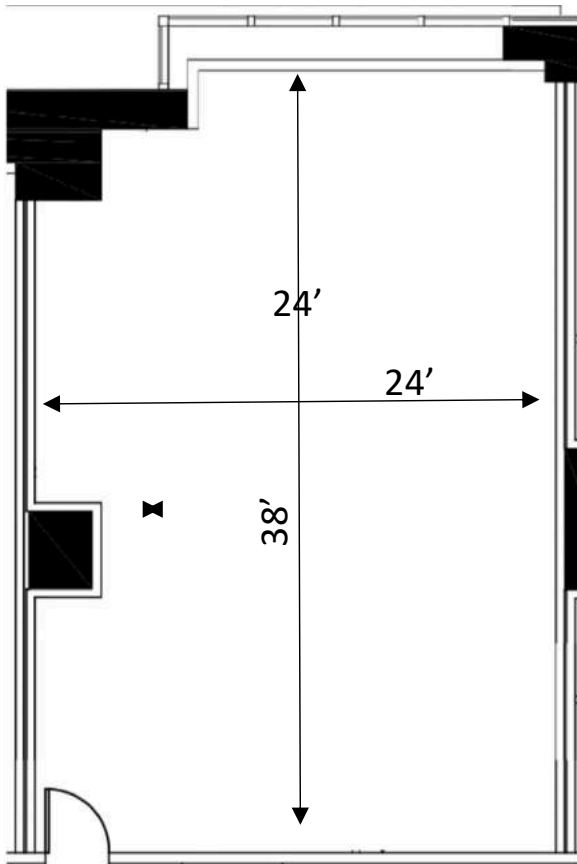


THE STAGE DOOR LOUNGE

(2,520/sf)



BREAKOUT / SUPPORT FACILITIES



LARGE SIZE:

FOUR ROOMS
Occupancy: 50

MEDIUM SIZE:

SIX ROOMS
Occupancy: 30

SMALL SIZE:

TEN ROOMS
Occupancy: 2-10

SEE FLOOR PLAN FOR SPECIFIC DIMENSIONS AND LOCATIONS



Open Jar Studios: Equipment		
ITEM	Available	Per Unit
Tables		
Rectangle: 72" x 30" [30" high]	10	Reservable
Rectangle: 30" x 24" [30" high]	3	Reservable
Adjustable Standing Desk (2'-4" W x 17 1/2" D x 30" - 42" adjustable height)	2	Reservable
24" Round Cocktail Table (42" tall) black	6	Reservable
24" Round Cocktail Table (adjustable 28" - 36" height) black with chrome	4	Reservable
Seating		
Stack Chairs (available up to max room occupancy)	TBD	Reservable
Stool Tall Shop Stool	10	Reservable
Tall Barstools with backrest (black) (30" tall)	2	Reservable
Audio/Video		
Speakers: 1100W 12" Yamaha DXR12 - on TeleLock Tripod Speaker Stand	2	Included (11A & 11B)
Mixer: 12-channel mixer with USB - Yamaha MG-12XU	1	Included (11A & 11B)
Cables: assorted XLR, AC		Included (11A & 11B)
Headphones: SONY MDR7506	1	Included (11A & 11B)
Microphones (wired) - SM58	2	Included (11A & 11B)
Microphone stand (boom)	2	Included (11A & 11B)
Mic Stand (upright)	2	Reservable
Mic Stand (boom)	2	Reservable
Media Cart: 60" LED Screen with HDMI port	2	\$ 50.00
Microphone (wireless handheld): Shure SLX wireless G4	2	\$ 100.00
Microphone (wireless lav) Shure SLX bodypack TXM J3	2	\$ 100.00
Microphone (headset) Shure MD35	2	\$ 100.00
Projector & Screen (LG ProBeam DLP Projector) (180" 16:9 4K HD Wide)	1	\$ 100.00
Basic Theatrical Lighting package with light board (ETC. Element) up to 4 hours	1	\$ 250.00
Basic Theatrical Lighting package with light board (ETC. Element) more than 4 hours	1	\$ 350.00
General		
Upright Piano	1	Included
Ballet Barre (long) 8'	9	Reservable
Ballet Barre (chrome) 7' long - 42" tall	5	Reservable
Ballet Barre (short) 4' long	3	Reservable
Coat Rack- Z Rack (6' tall x 5' wide)	10	Reservable
Riser (3' x 8' Ht: 8")	6	\$ 50.00
Riser (3'x8' Ht: 16")	6	\$ 50.00
Slipcover divider (8' x 5' wide) to add to coat rack to make tall divider	4	Reservable
Curtain for addition to Z-Rack	2	Reservable
Mobile Wall Divider (25' x 8' tall) expandable wall	2	Reservable
Music Stand	50	Reservable
Piano Muffler	1	Reservable
Mobile Call Board - Full	2	Reservable
Mobile Call Board - Small	2	Reservable
PRINTING: Scripts & Scores		
B&W (8.5" x 11")/cost per page		\$ 0.09
Color (8.5" x 11")/cost per page		\$ 0.26
Binder (1" view)		\$ 6.99
Binder (1 1/2" view)		\$ 7.99