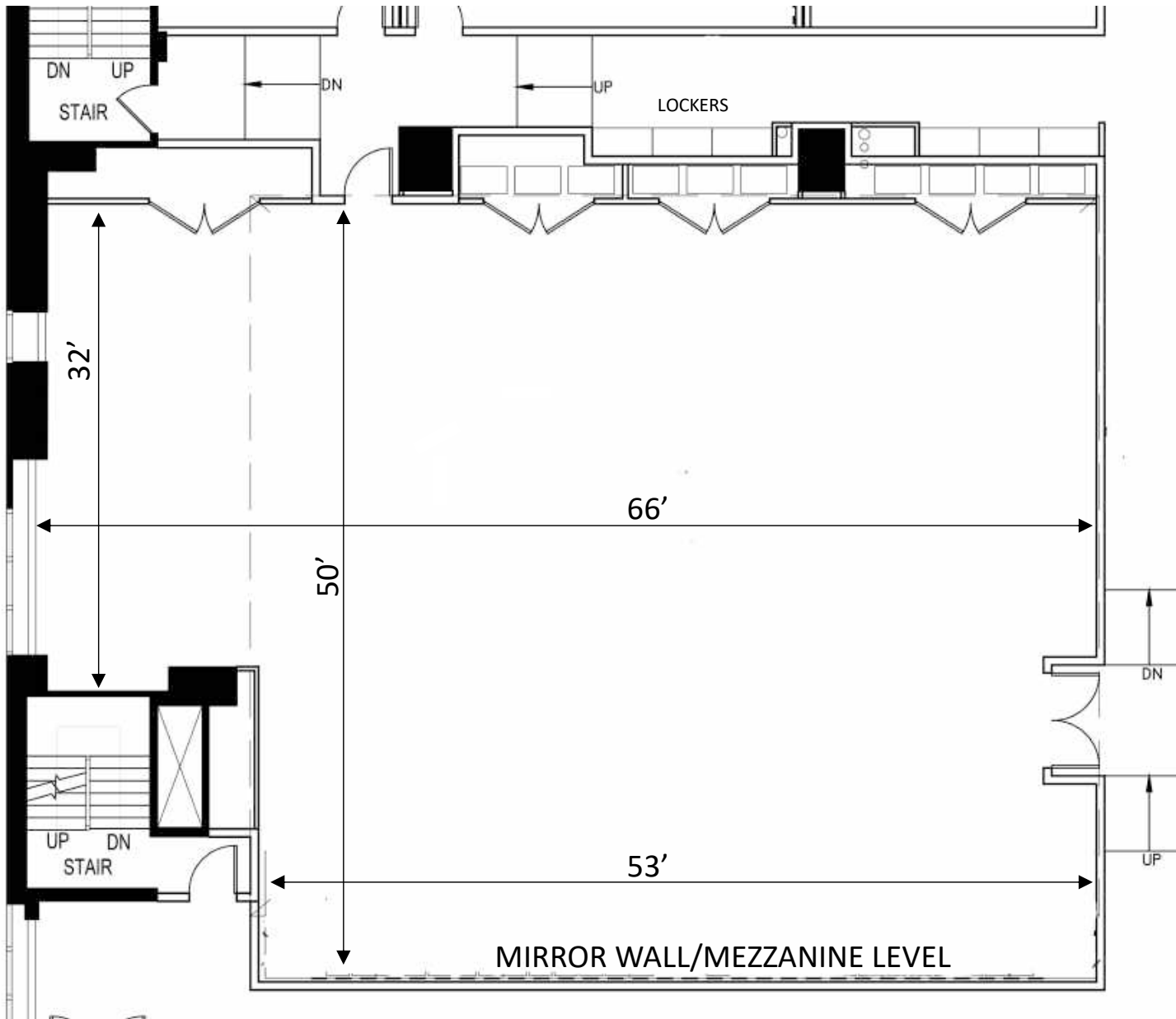


THE PREMIERE

STUDIO 11B (3,300/sf)

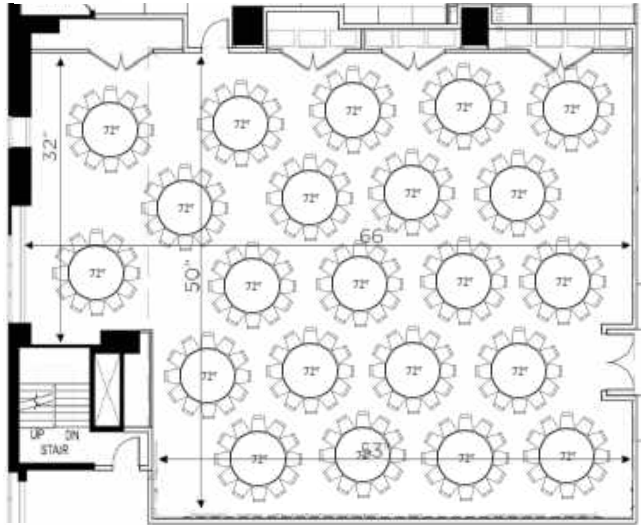
W: 66' D: 50' Ht.: 22' (20' clearance)



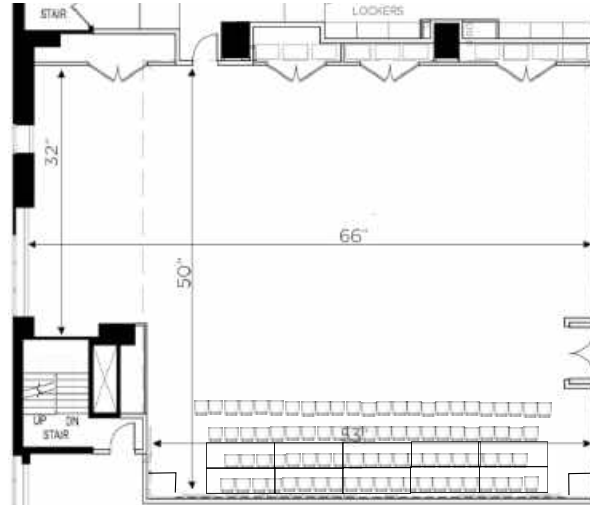
THE PREMIERE - STUDIO 11B: 66' x 50'



72" tables x 22
Capacity: 264



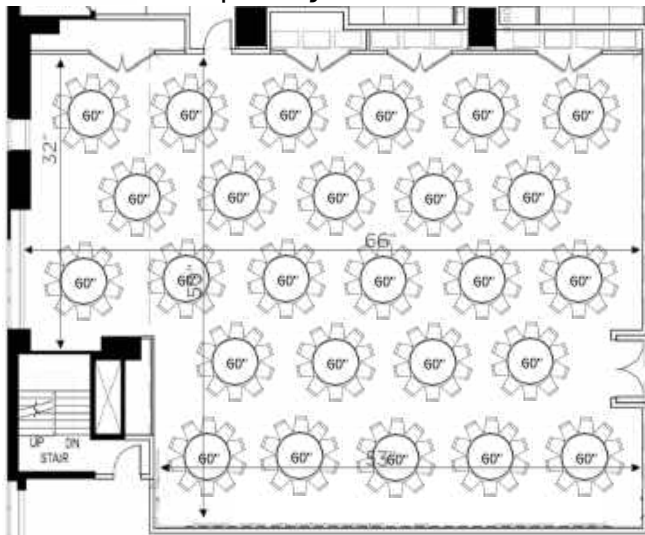
Theater Set Up
Capacity: 100



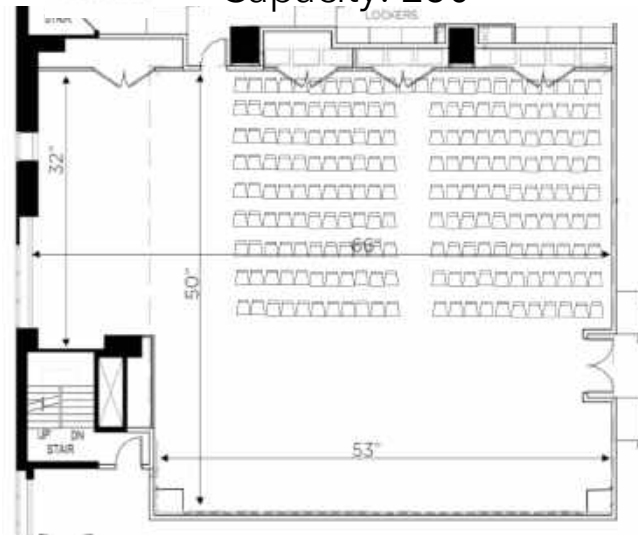
Trade Show: 10 x 10
Capacity: 230



60" tables x 26 tables
Capacity: 260



Theater Set Up
Capacity: 230



THE PREMIERE STUDIO 11B (3,300/sf) TECH SPECS

STUDIO 11B: W: 66' D: 50' Ht.: 22' (20' clearance)

Sprung dance floor with vinyl surface.

Studio length mirrors

Upright piano

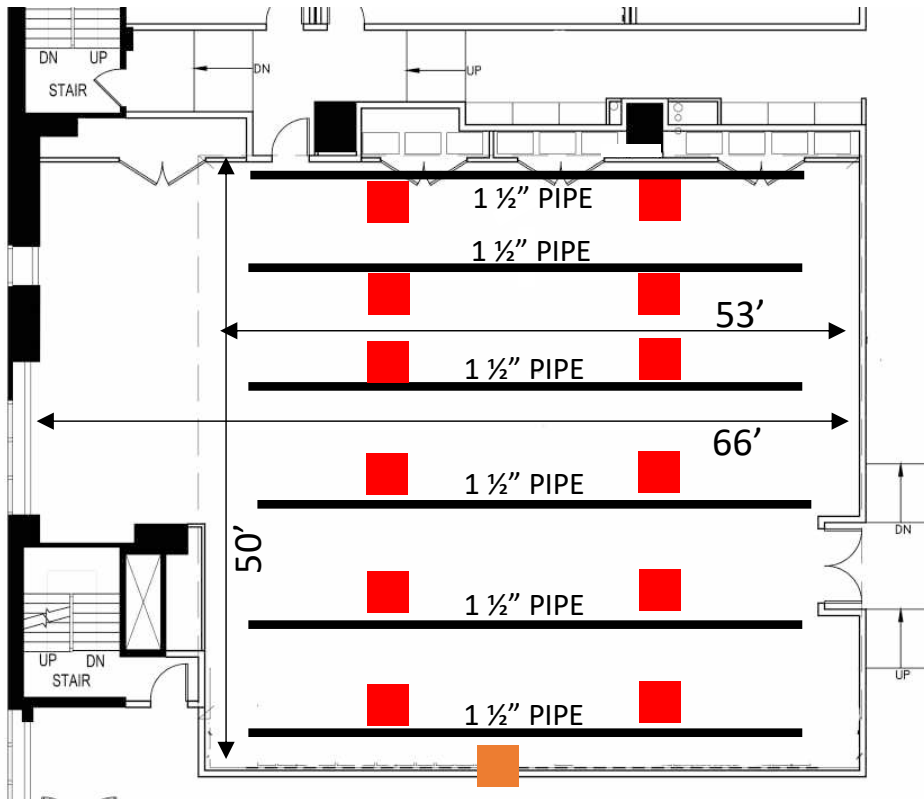
Mezzanine overlook with spiral stair access

Individually climate controlled

Private WiFi for package rental.

Sound-attenuated studios.

Occupancy: 125 (up to 230 attendees by holding other rooms empty).



Sound Support:

2 1100W 12" Yamaha DXR12 speaker on TeleLock Tripod stand

Mixer: 12-channel Yamaha MG-12XU with USB.

2 wired SM58 Microphones

2 boom microphone stands

Off street-loading dock: 30-foot box truck (12.5' high) takes elevator to basement of building to unload, then transfer materials to freight elevator to transport to floor.

Truck Elevator (L:38.5' W:11.5' Ht:13.5') Available 24/7 (to be scheduled with the management).

Freight Elevator:

Inside dimensions: 76"(w) x 65" (d) x 9'6" (ht). (325 cubic feet)

Door opening: 41.5" (w) x 7" high.

Power/Ceiling Grid:

Pipe grid for static hangs (1 1/2" pipe) with power on each pipe. Each pipe holds up to 600 LBS.

————— 1 1/2" PIPE FOR STATIC HANGS UP TO 600 LBS.

■ 20AMP STUDIO CEILING POWER CONNECTIONS
MFR: ETC.

MODEL #: 98048 W/ RACO BACK BOX PART #693

2 STAGE PIN CONNECTOR PER LOCATION ON 1 CIRCUIT

■ POWERGATE 200 AMP COMPANY SWITCH
MODEL #: CS-200F-C60Si



Open Jar Studios: Equipment		
ITEM	Available	Per Unit
Tables		
Rectangle: 72" x 30" [30" high]	10	Reservable
Rectangle: 30" x 24" [30" high]	3	Reservable
Adjustable Standing Desk (2'-4" W x 17 1/2" D x 30" - 42" adjustable height)	2	Reservable
24" Round Cocktail Table (42" tall) black	6	Reservable
24" Round Cocktail Table (adjustable 28" - 36" height) black with chrome	4	Reservable
Seating		
Stack Chairs (available up to max room occupancy)	TBD	Reservable
Stool Tall Shop Stool	10	Reservable
Tall Barstools with backrest (black) (30" tall)	2	Reservable
Audio/Video		
Speakers: 1100W 12" Yamaha DXR12 - on TeleLock Tripod Speaker Stand	2	Included (11A & 11B)
Mixer: 12-channel mixer with USB - Yamaha MG-12XU	1	Included (11A & 11B)
Cables: assorted XLR, AC		Included (11A & 11B)
Headphones: SONY MDR7506	1	Included (11A & 11B)
Microphones (wired) - SM58	2	Included (11A & 11B)
Microphone stand (boom)	2	Included (11A & 11B)
Mic Stand (upright)	2	Reservable
Mic Stand (boom)	2	Reservable
Media Cart: 60" LED Screen with HDMI port	2	\$ 50.00
Microphone (wireless handheld): Shure SLX wireless G4	2	\$ 100.00
Microphone (wireless lav) Shure SLX bodypack TXM J3	2	\$ 100.00
Microphone (headset) Shure MD35	2	\$ 100.00
Projector & Screen (LG ProBeam DLP Projector) (180" 16:9 4K HD Wide)	1	\$ 100.00
Basic Theatrical Lighting package with light board (ETC. Element) up to 4 hours	1	\$ 250.00
Basic Theatrical Lighting package with light board (ETC. Element) more than 4 hours	1	\$ 350.00
General		
Upright Piano	1	Included
Ballet Barre (long) 8'	9	Reservable
Ballet Barre (chrome) 7' long - 42" tall	5	Reservable
Ballet Barre (short) 4' long	3	Reservable
Coat Rack- Z Rack (6' tall x 5' wide)	10	Reservable
Riser (3' x 8' Ht: 8")	6	\$ 50.00
Riser (3'x8' Ht: 16")	6	\$ 50.00
Slipcover divider (8' x 5' wide) to add to coat rack to make tall divider	4	Reservable
Curtain for addition to Z-Rack	2	Reservable
Mobile Wall Divider (25' x 8' tall) expandable wall	2	Reservable
Music Stand	50	Reservable
Piano Muffler	1	Reservable
Mobile Call Board - Full	2	Reservable
Mobile Call Board - Small	2	Reservable
PRINTING: Scripts & Scores		
B&W (8.5" x 11")/cost per page		\$ 0.09
Color (8.5" x 11")/cost per page		\$ 0.26
Binder (1" view)		\$ 6.99
Binder (1 1/2" view)		\$ 7.99