

www.openjarstudios.com



Technical Specifications and Venue Information

CONTACTS:

SALES DIRECTOR:

Michael Wysong

T: 212-582-1417 x202

E: michael.wysong@openjarstudios.com

FACILITY MANAGER:

Jostyn Kohner

T: 212-582-1417 x108

E: jostyn.kohner@openjarstudios.com



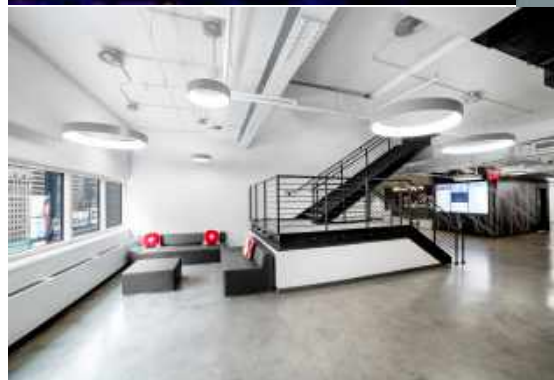
Times Square Rehearsal Space

With stunning views overlooking Times Square, this flexible white box space on 48th Street and Broadway provides a blank canvas to bring your production to life.

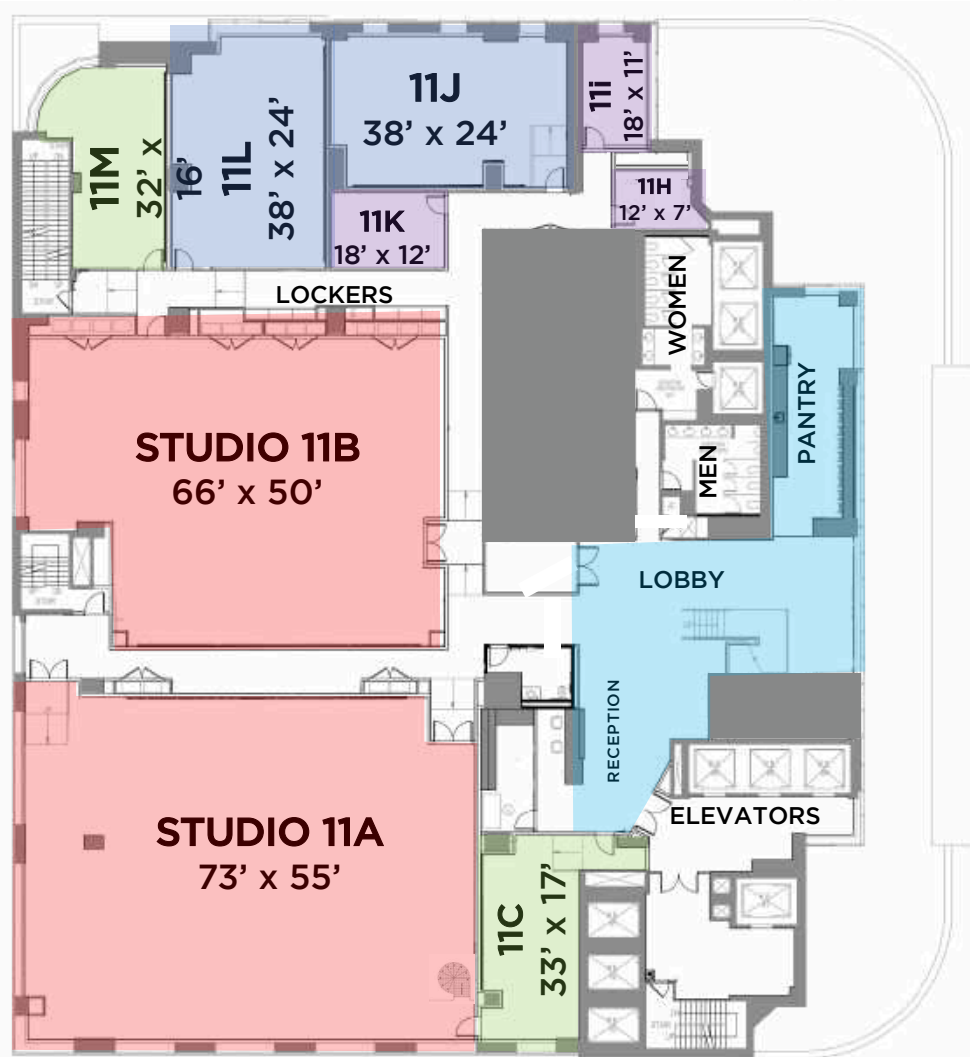
Our marquis 4,015 square foot space features 22' ceilings and large windows overlooking The Theatre District, providing limitless possibilities for production needs.

The studio complex boasts 22 flexible spaces of differing sizes across 50,000/sf, which can be combined to create the ideal venue for any size production.

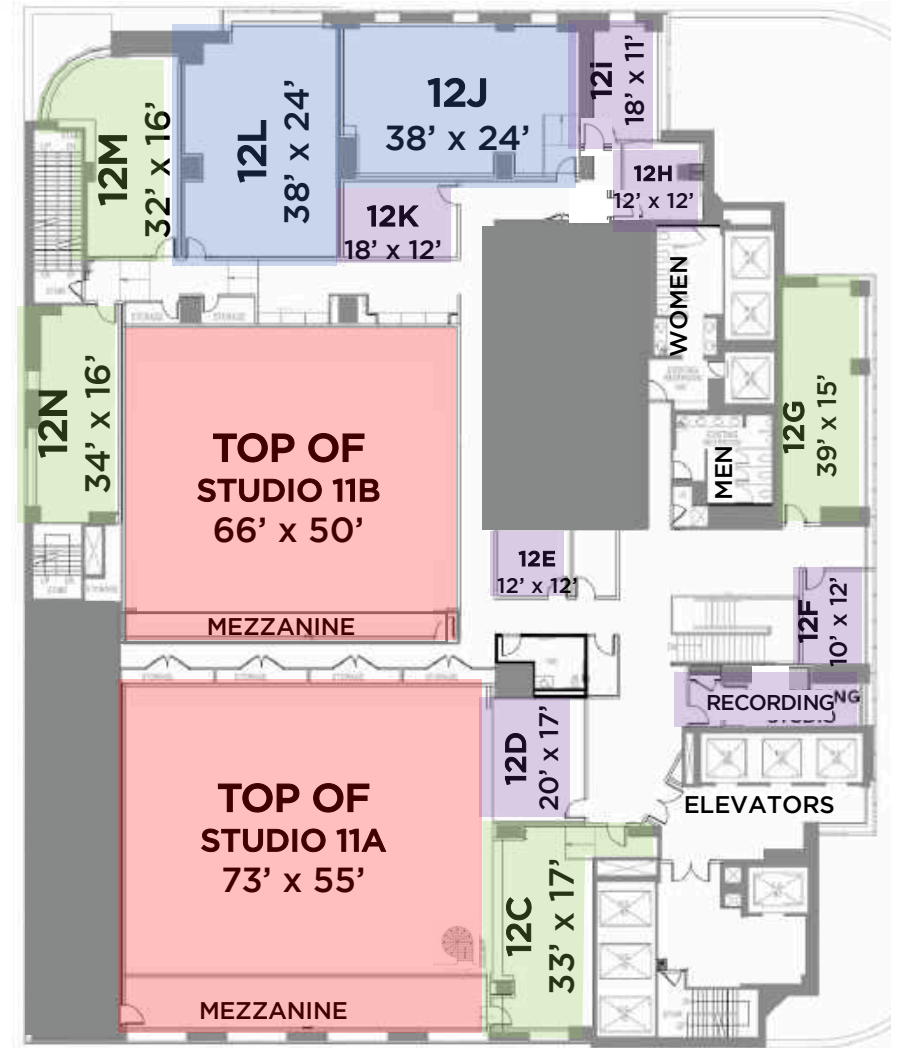
**1601 Broadway - 11th & 12th Floor
New York, NY 10019**



11th Floor



12th Floor



2 EXTRA LARGE STUDIOS:

STUDIO 11A: 4,015/sf -
22' high ceiling, Mezzanine /Spiral Staircase

STUDIO 11B: 3,300/sf - 22' high ceiling
Mezzanine Level overlook

4 LARGE STUDIOS:

912/sf - 11' high ceiling

6 MEDIUM STUDIOS:

550/sf - 11' high ceiling

10 SMALL STUDIOS:

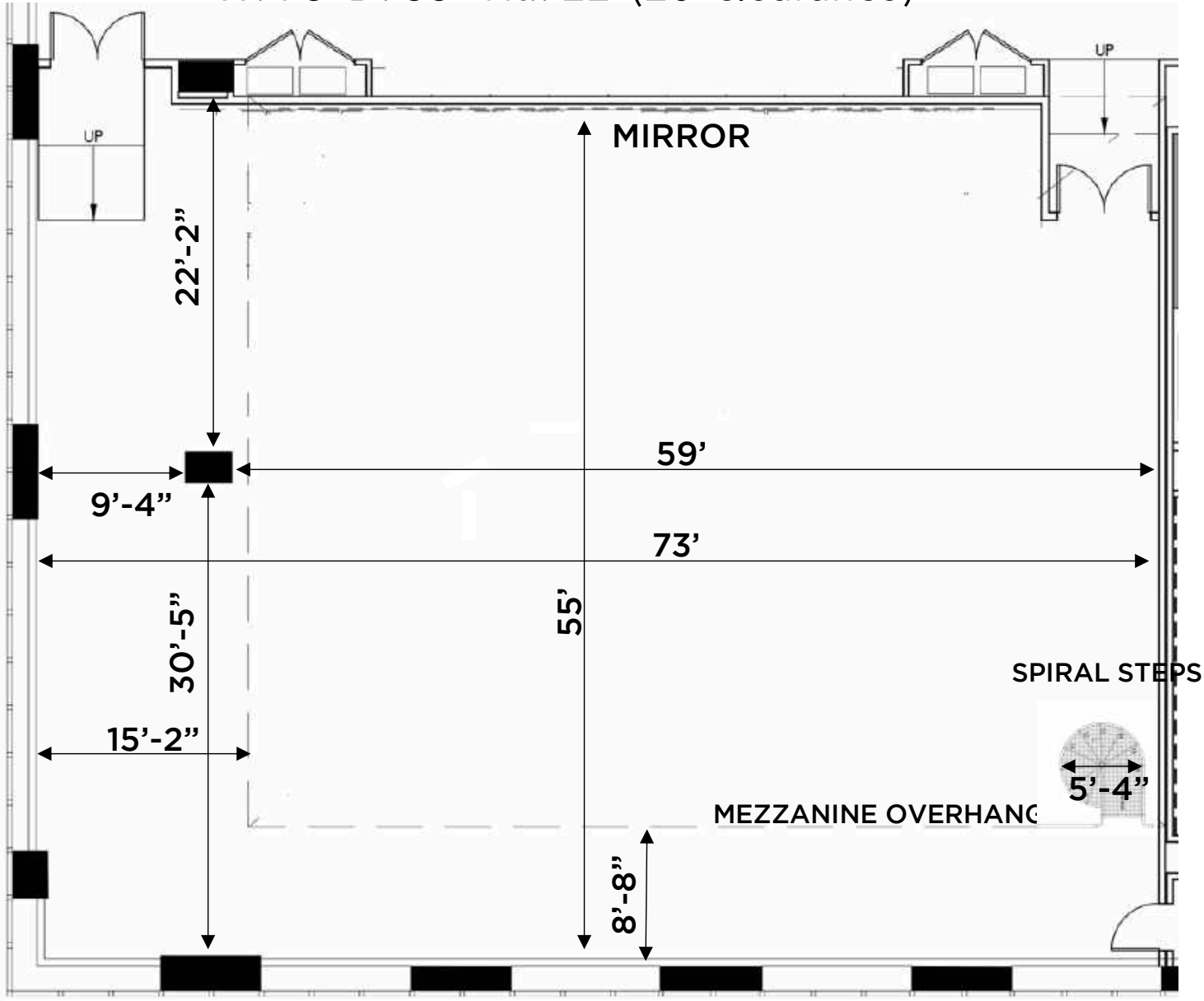
200/sf - 11' high ceiling

RECEPTION/KITCHEN/LOUNGE:

2,520/sf - 11' high ceiling

STUDIO 11A (4,015/sf)

W: 73' D: 55' Ht.: 22' (20' clearance)

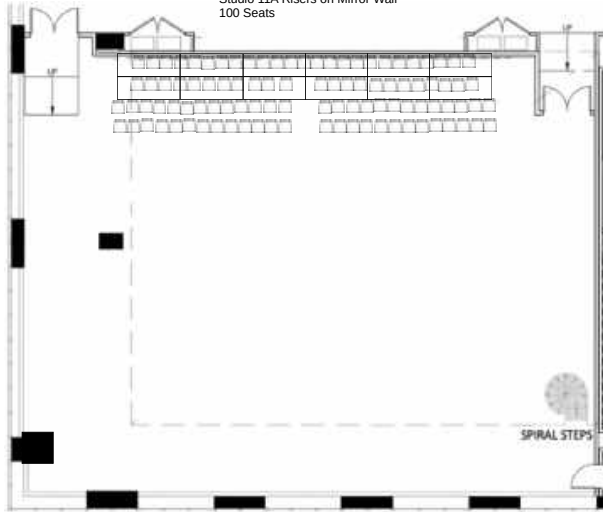


STUDIO 11A 73' x 55'



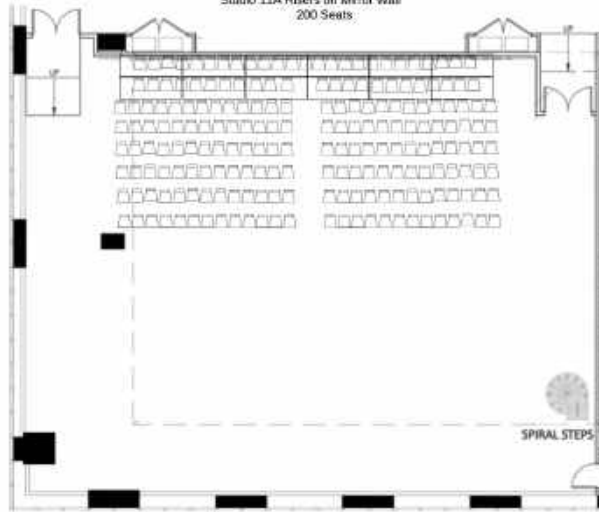
Theater Set Up
Capacity: 100

Studio 11A Risers on Mirror Wall
100 Seats



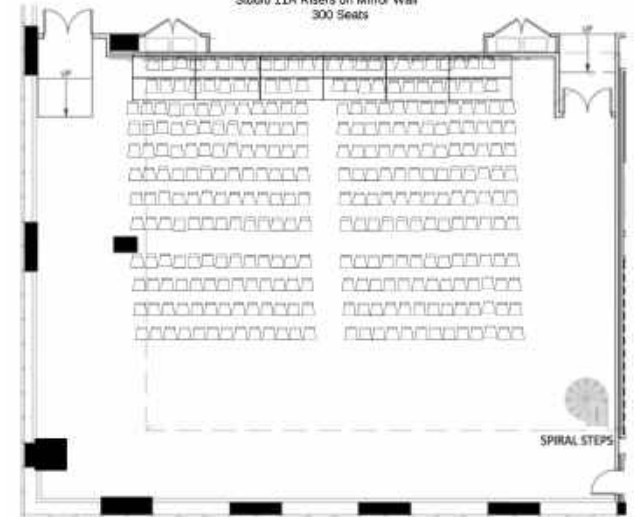
Theater Set Up
Capacity: 200

STUDIO 11A RISERS ON MIRROR WALL
200 Seats



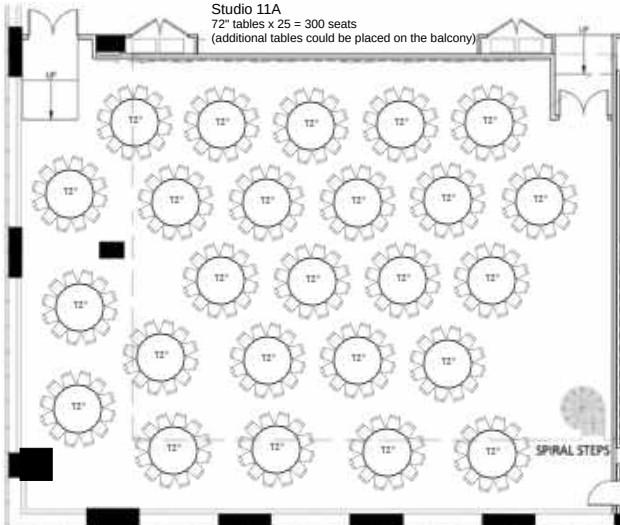
Theater Set Up
Capacity: 300

Studio 11A Risers on Mirror Wall
300 Seats



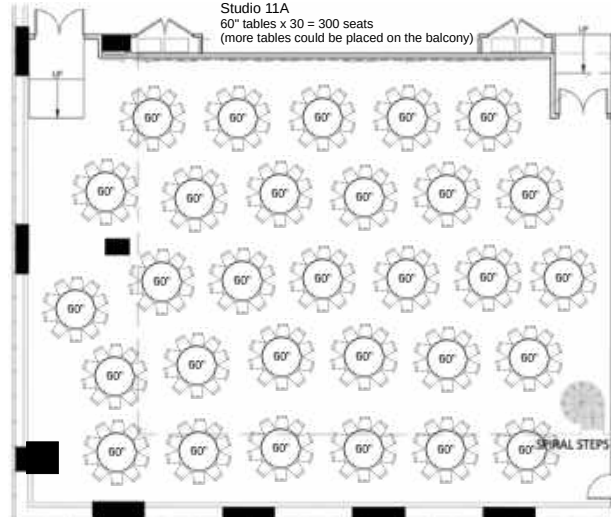
72" tables x 25
Capacity: 300

Studio 11A
72" tables x 25 = 300 seats
(additional tables could be placed on the balcony)

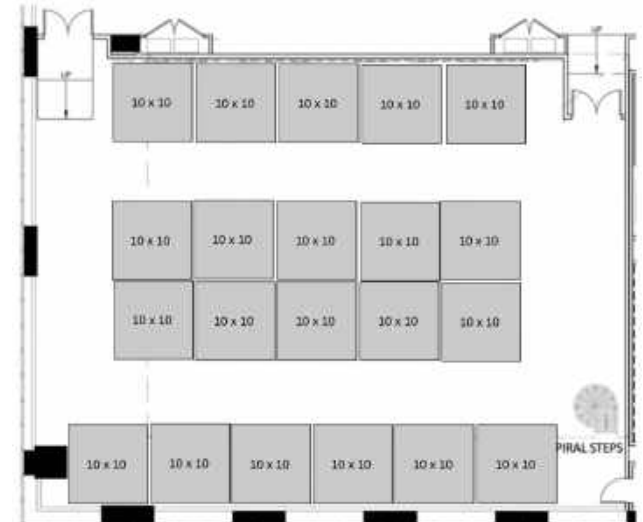


60" tables x 30
Capacity: 300

Studio 11A
60" tables x 30 = 300 seats
(more tables could be placed on the balcony)



Trade Show: 10 x 10
Capacity: 300



STUDIO 11A (4,015/sf)

TECH SPECS

STUDIO 11A: W: 73' D: 55' Ht.: 22' (20' clearance)

Sprung dance floor with vinyl surface.

Studio length mirrors (with curtains)

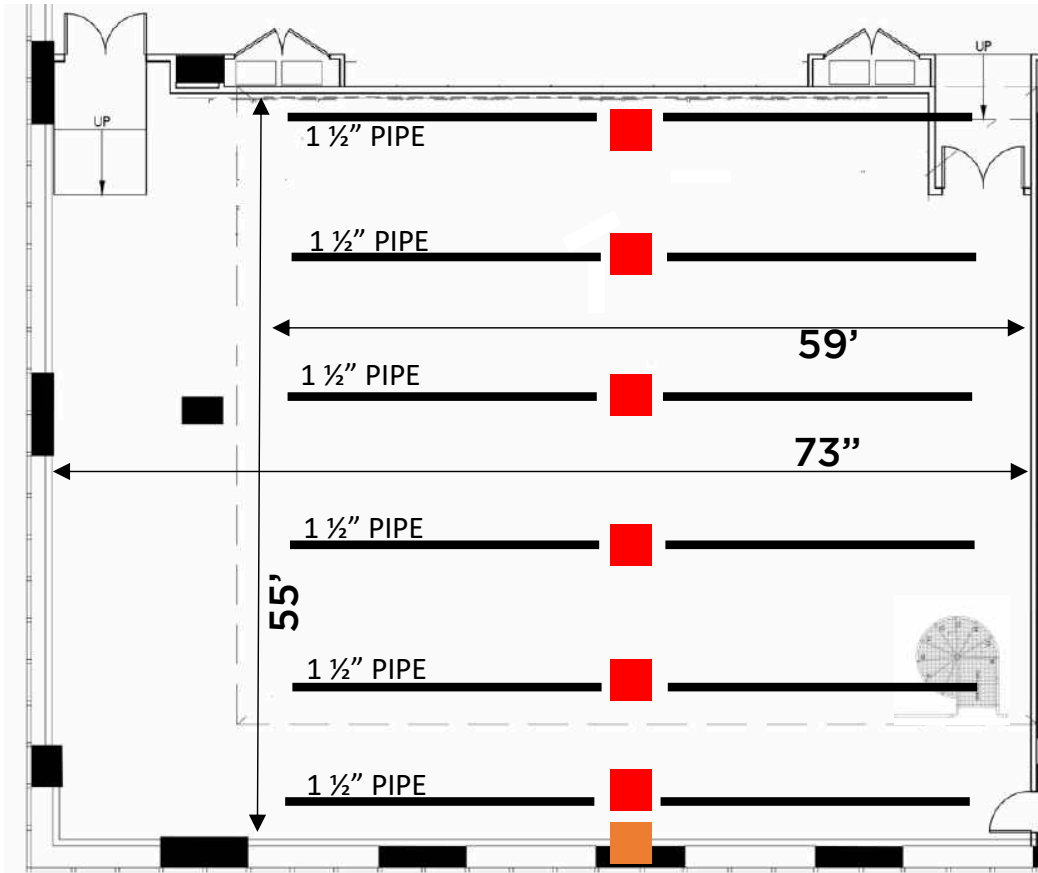
Mezzanine overlook with spiral stair access

Individually climate controlled

Private WiFi for package rental.

Sound-attenuated studios.

Occupancy: 125 (up to 300 attendees with additional permits).



Sound Support:

2 1100W 12" Yamaha DXR12 speaker on TeleLock Tripod stand

Mixer: 12-channel Yamaha MG-12XU with USB.

Power/Ceiling Grid:

Pipe grid for static hangs (1 1/2" pipe) with power on each pipe. Each pipe holds up to 300 LBS.

Chairs: Stacked Ski-Style chairs (enough for full capacity)

Tables: Eight 6-foot foldable tables (more upon request)

Music Stands: upon request

Piano: Upright Yamaha Piano

Coat Z-Rack: upon request

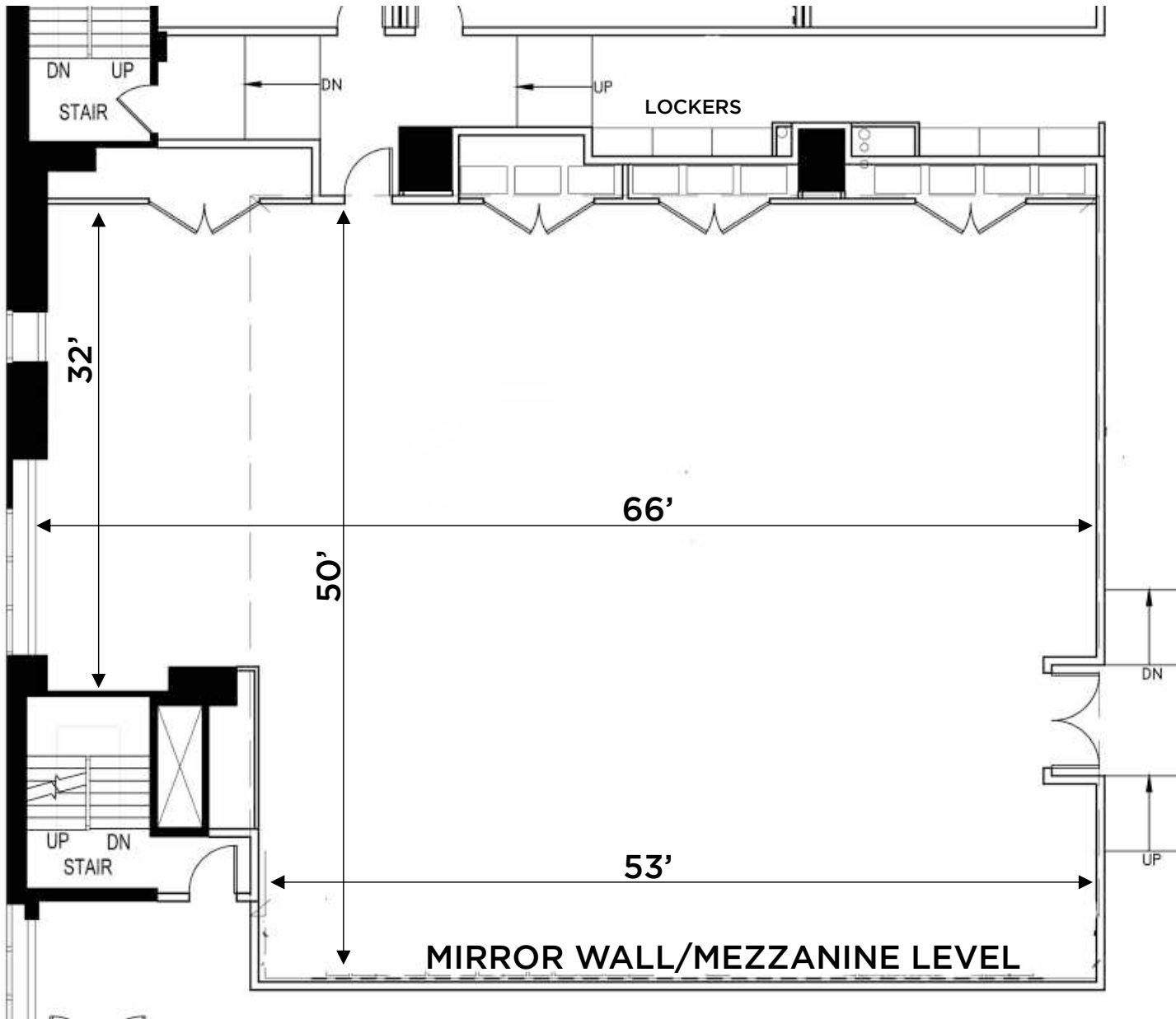
— 1 1/2" PIPE FOR STATIC HANGS UP TO 300 LBS.

■ 20AMP STUDIO CEILING POWER CONNECTIONS
MFR: ETC.
MODEL #: 98048 W/ RACO BACK BOX PART #693
4 STAGE PIN CONNECTOR PER LOCATION ON 2 CIRCUITS

■ POWERGATE 200 AMP COMPANY SWITCH
MODEL #: CS-200F-C60Si

STUDIO 11B (3,300/sf)

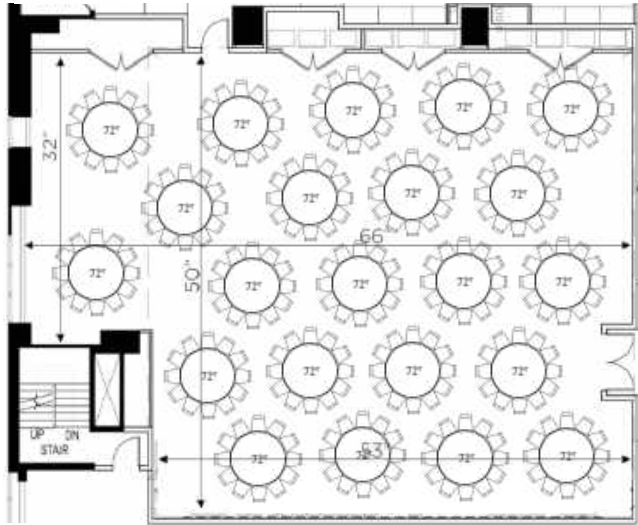
W: 66' D: 50' Ht.: 22' (20' clearance)



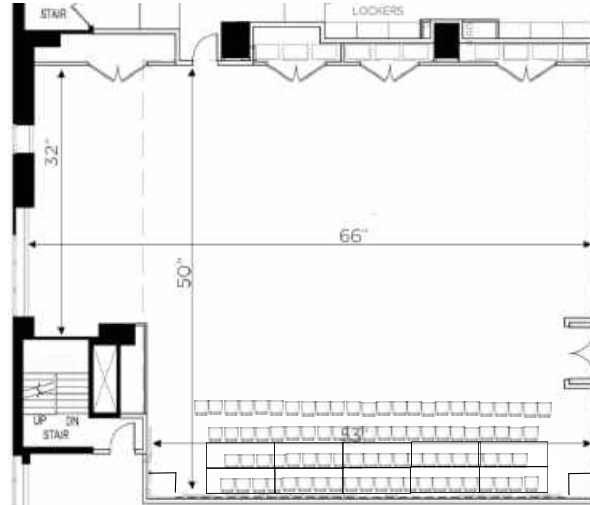
STUDIO 11B: 66' x 50'



72" tables x 22
Capacity: 264



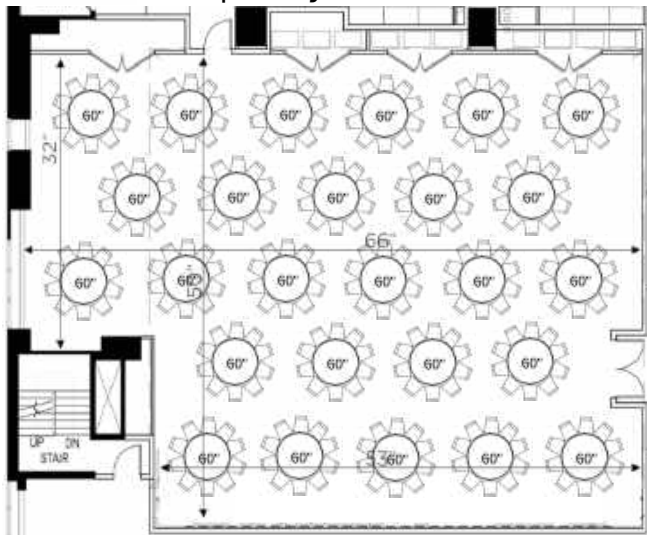
Theater Set Up
Capacity: 100



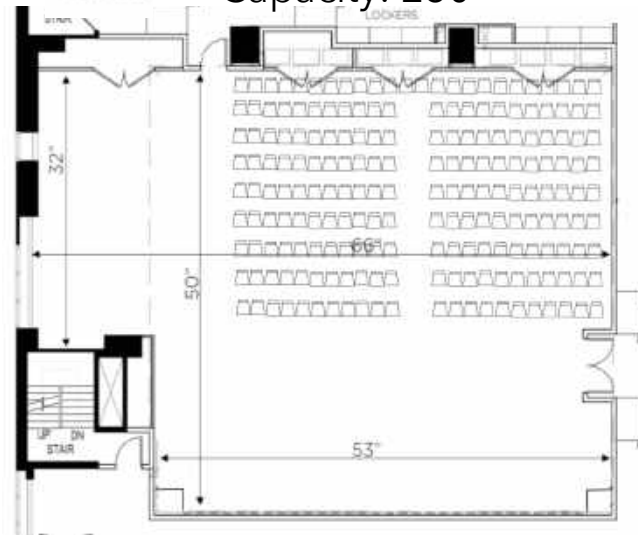
Trade Show: 10 x 10
Capacity: 230



60" tables x 26 tables
Capacity: 260



Theater Set Up
Capacity: 230



STUDIO 11B (3,300/sf)

TECH SPECS

STUDIO 11B: W: 66' D: 50' Ht.: 22' (20' clearance)

Sprung dance floor with vinyl surface.

Studio length mirrors

Upright piano

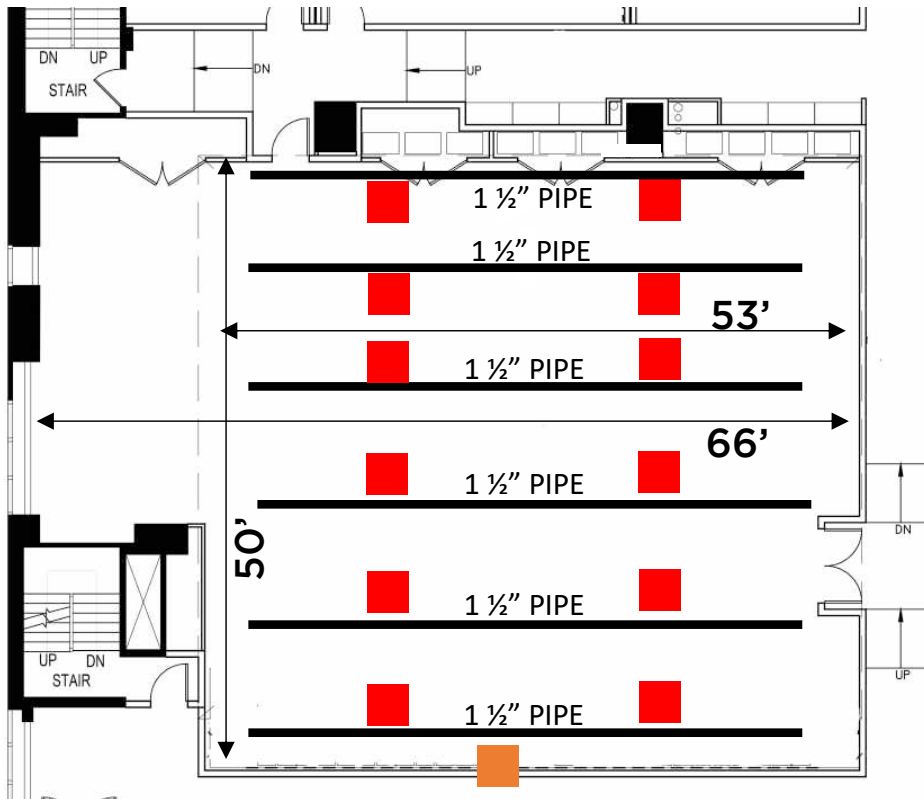
Mezzanine overlook with spiral stair access

Individually climate controlled

Private WiFi for package rental.

Sound-attenuated studios.

Occupancy: 125 (up to 230 attendees with additional permits).



Sound Support:

2 1100W 12" Yamaha DXR12 speaker on TeleLock Tripod stand

Mixer: 12-channel Yamaha MG-12XU with USB.

Power/Ceiling Grid:

Pipe grid for static hangs (1 1/2" pipe) with power on each pipe. Each pipe holds up to 600 LBS.

Chairs: Stacked Ski-Style chairs (enough for full capacity)

Tables: 10 6-foot foldable tables (more upon request)

Music Stands: 20 adjustable music stands (more upon request)

Piano: Upright Yamaha Piano

Coat Z-Rack: upon request

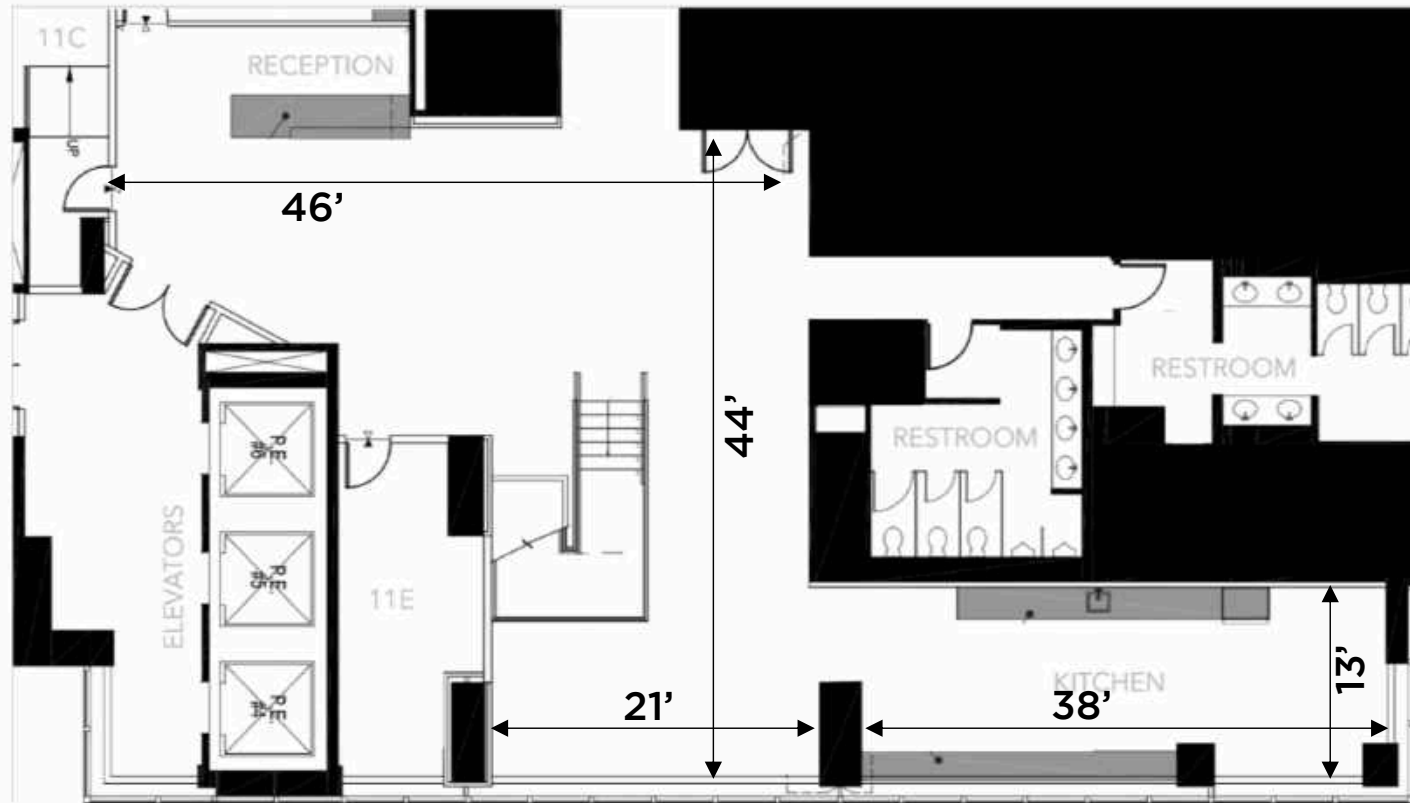
— 1 1/2" PIPE FOR STATIC HANGS UP TO 600 LBS.

■ 20AMP STUDIO CEILING POWER CONNECTIONS
MFR: ETC.
MODEL #: 98048 W/ RACO BACK BOX PART #693
2 STAGE PIN CONNECTOR PER LOCATION ON 1 CIRCUIT

■ POWERGATE 200 AMP COMPANY SWITCH
MODEL #: CS-200F-C60Si

RECEPTION/LOBBY/KITCHEN

2,520 square feet



Reception: Check-in with staff

Steps: Steps lead to 12th floor

Kitchen:

Refrigerator: cleaned each night

Microwaves: 2 microwaves

Water Fountain: Drinking/Refillable water bottle station

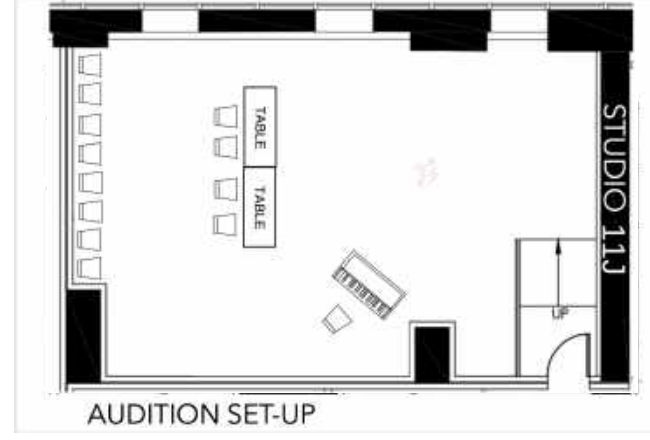
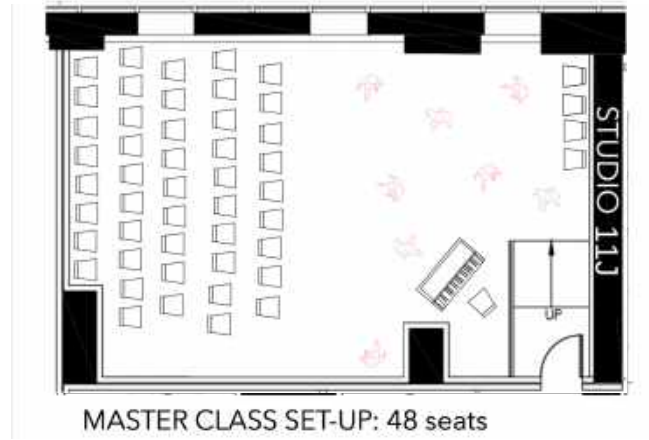
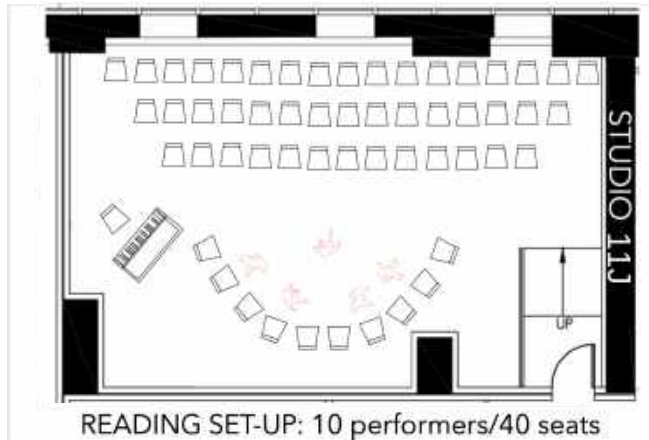
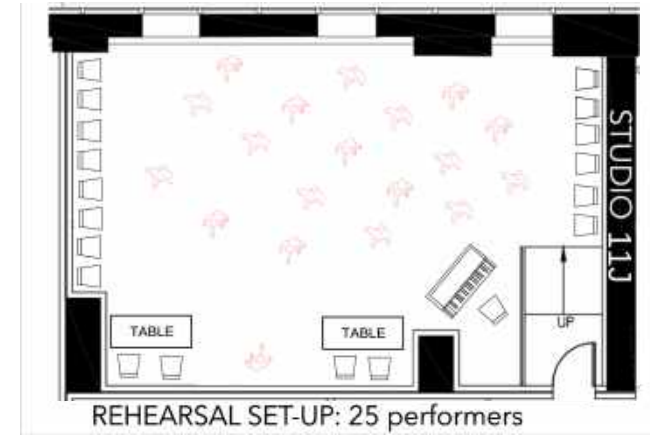
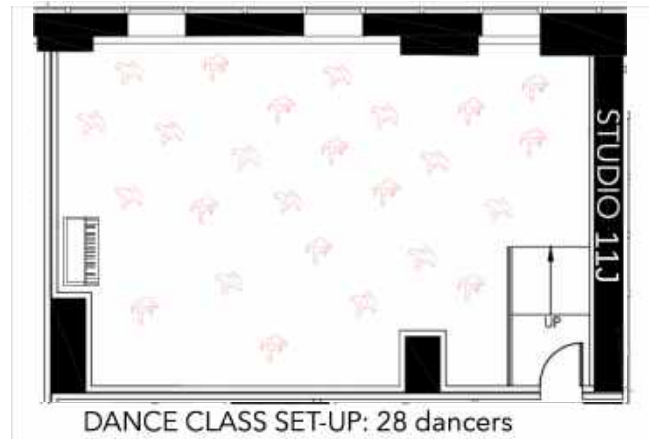
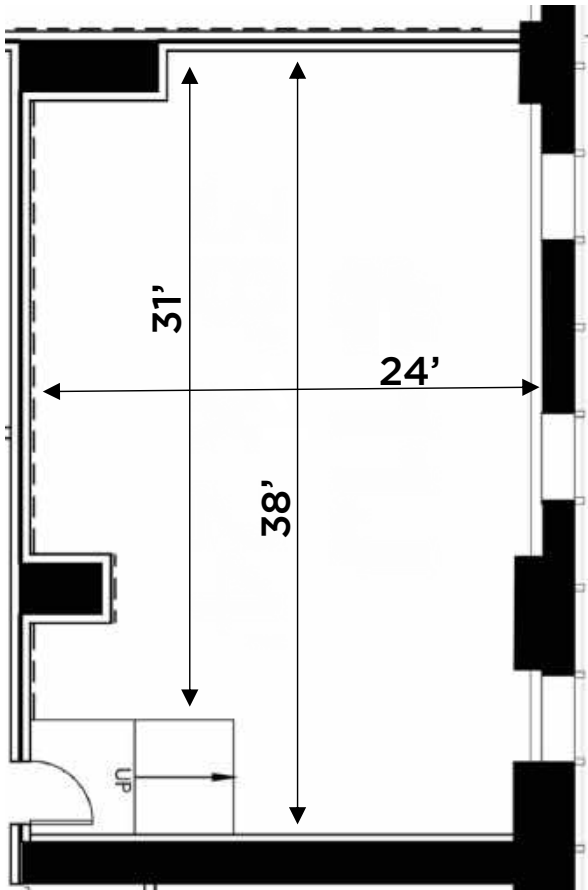
Hot Water: Hot water for tea.

Tables: Individual tables and counter seating overlooking Times Square



STUDIO 11J & 12J

SAMPLE LAYOUTS



STUDIO J (11J, 12J)

38' x 24' (912/sf) Occupancy: 50
Sprung Floor/Vinyl covering

Piano: Upright piano

Music Stand: 1 (more upon request)

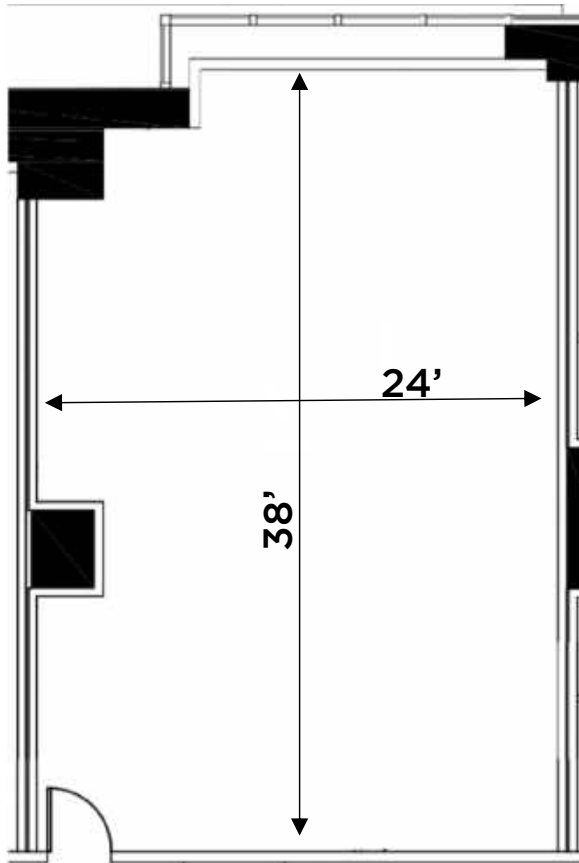
Chairs: 50 Stacked Ski-Style chairs

Tables: 2 6-foot foldable tables (more upon request)

Sound Speaker: Samsung RS110A
BlueTooth connectivity & Phone cable

STUDIO 11L/12L

SAMPLE LAYOUTS



STUDIO L (11L, 12L)

38' x 24' (912/sf) / Occupancy: 50

Sprung Floor/Vinyl covering

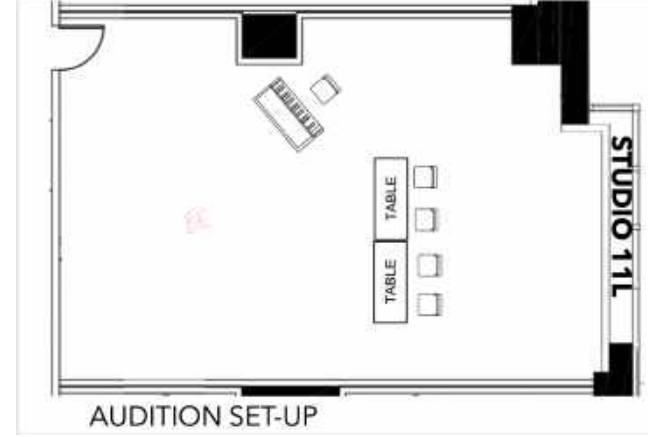
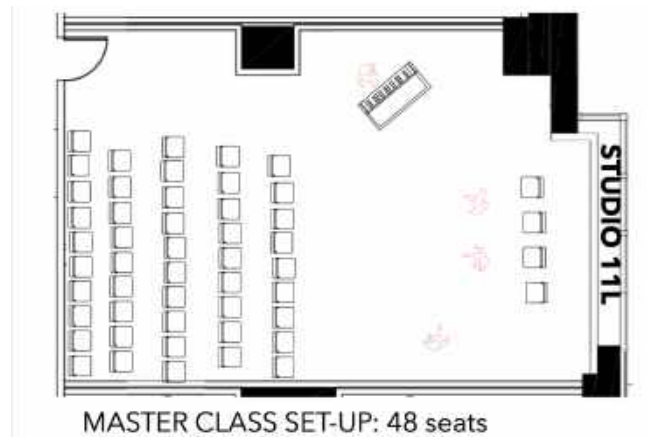
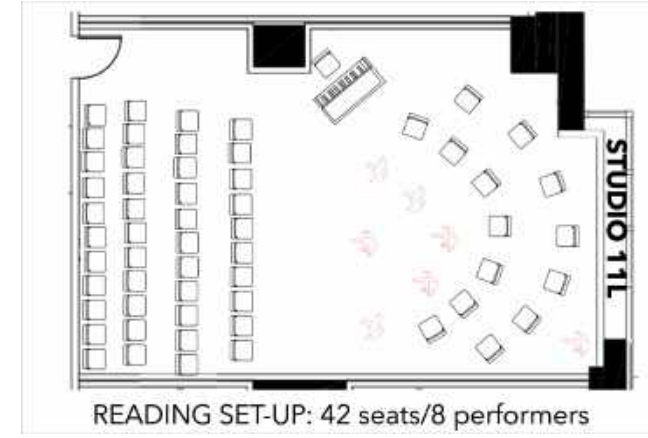
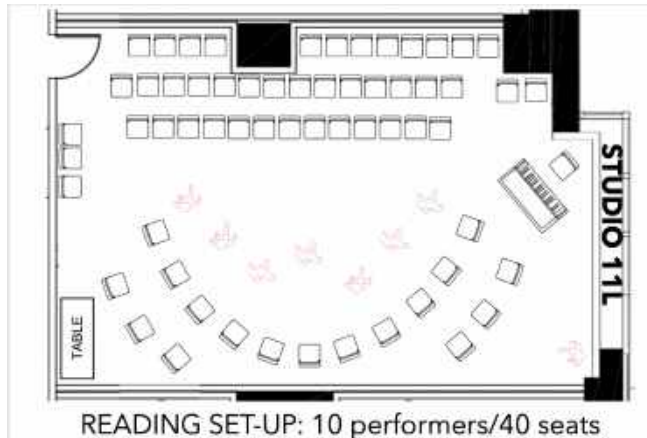
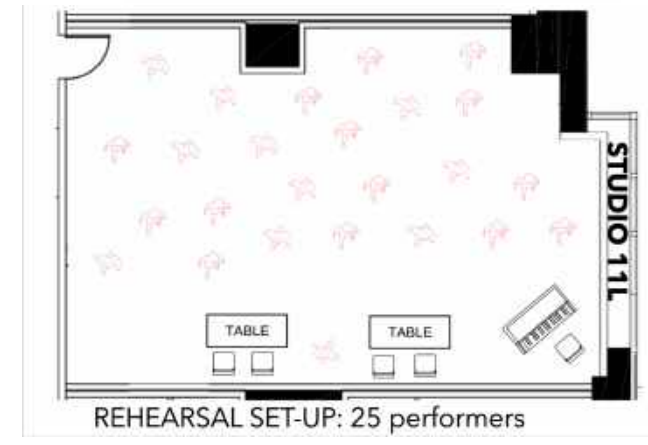
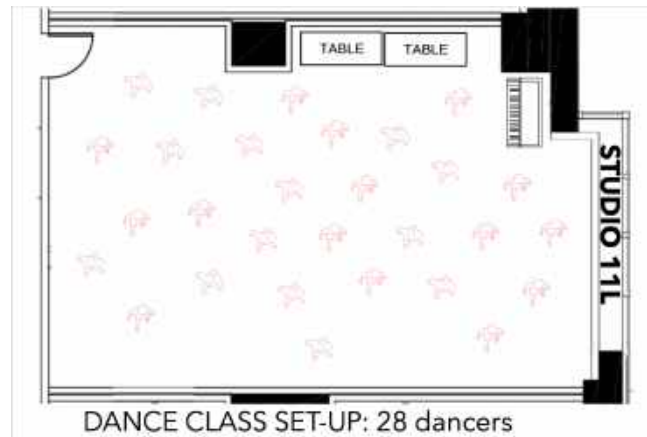
Piano: Upright piano

Music Stand: 1 (more upon request)

Chairs: 50 Stacked Ski-Style chairs

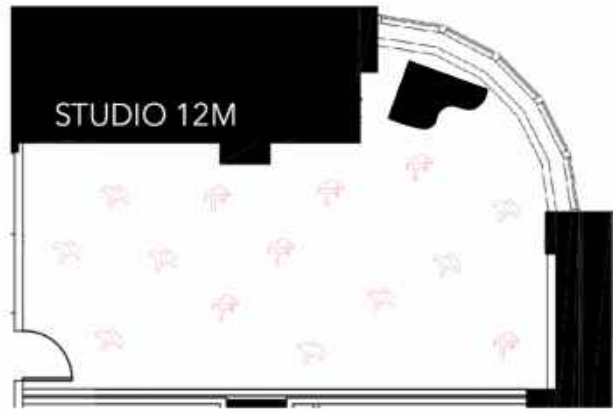
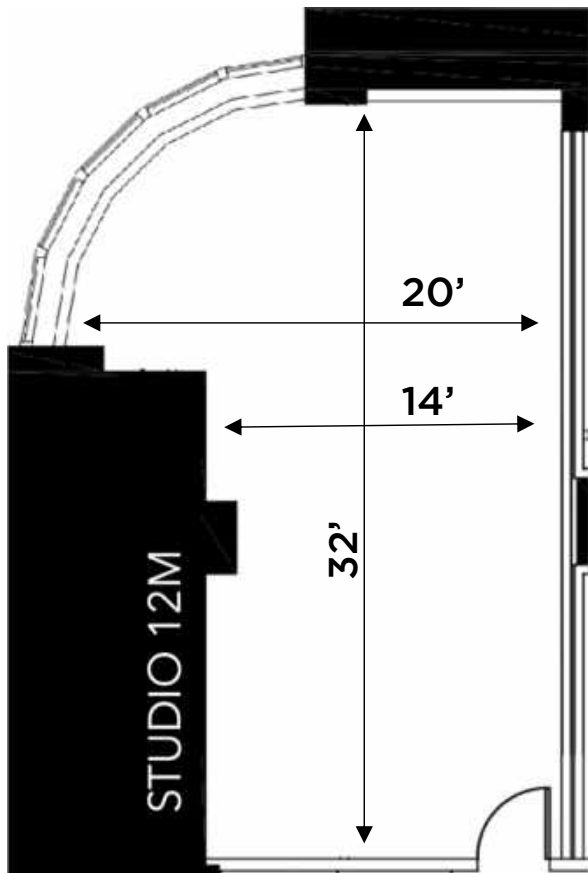
Tables: 2 6-foot foldable tables (more upon request)

Sound Speaker: Samsung RS110A
Bluetooth connectivity & Phone cable



STUDIO 12M

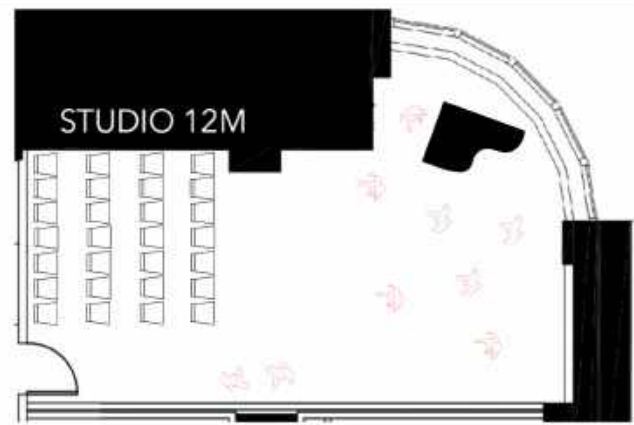
SAMPLE LAYOUTS



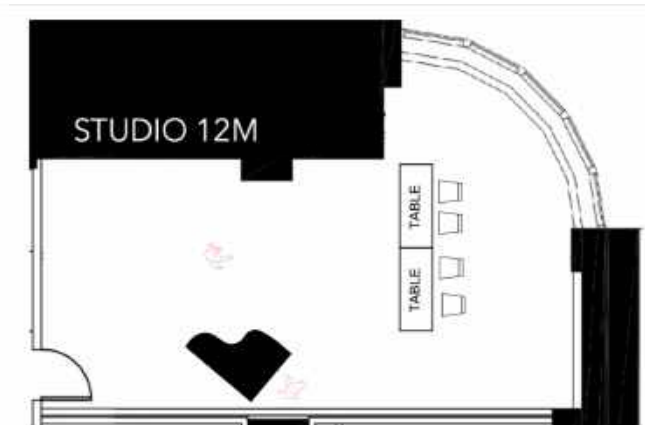
DANCE CLASS SET-UP: 14 dancers



REHEARSAL SET-UP: 12 performers



MASTER CLASS SET-UP: 28 observers



AUCTION SET-UP:

STUDIO 12M:

32' x 14' - 20' (544/sf)

Occupancy: 30

Sprung Dance Floor/vinyl cover

Baby Grand Piano

Chairs: 25 (more upon request)

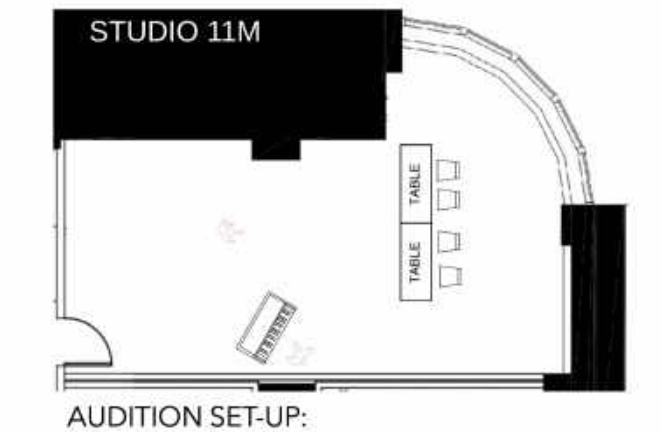
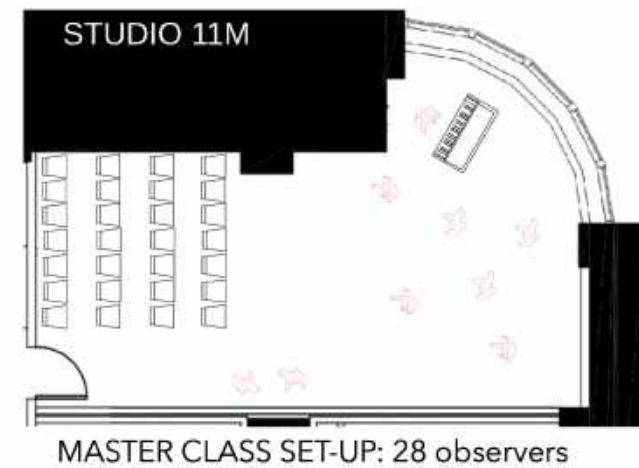
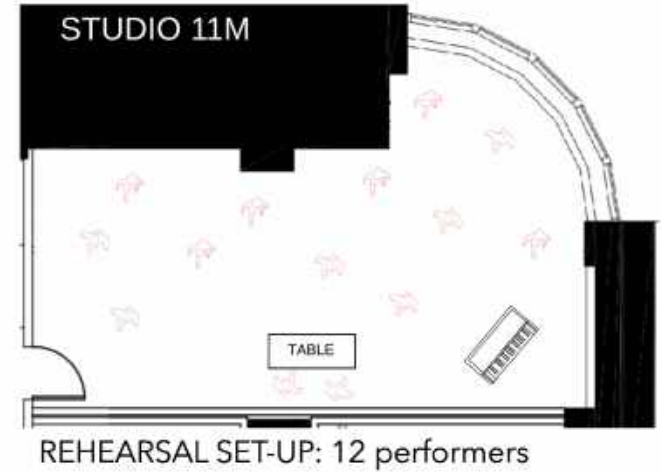
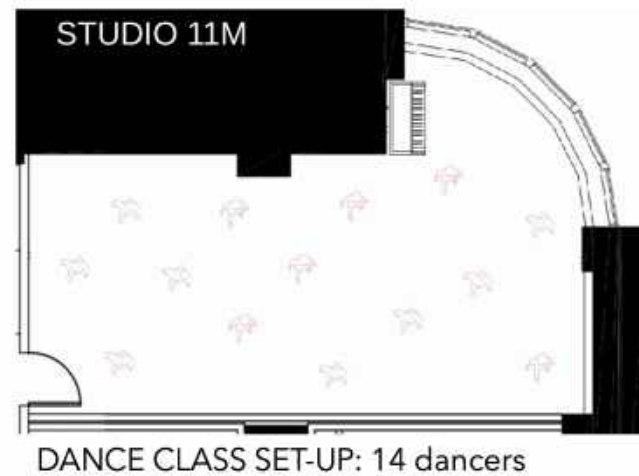
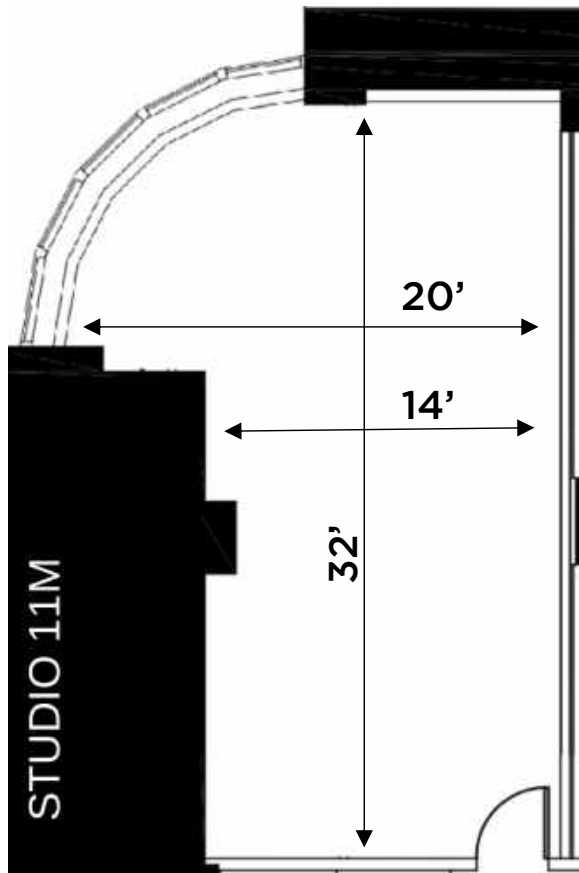
Tables: 2 6-foot tables

Music Stand: 1 (more upon request)

Sound Speaker: Samsung RS110A BlueTooth connectivity & Phone cable

STUDIO 11M

SAMPLE LAYOUTS



STUDIO 11M:

32' x 14' - 20' (544/sf)

Occupancy: 30

Sprung Dance Floor/vinyl cover

Upright Piano

Chairs: 25 (more upon request)

Tables: 2 6-foot tables

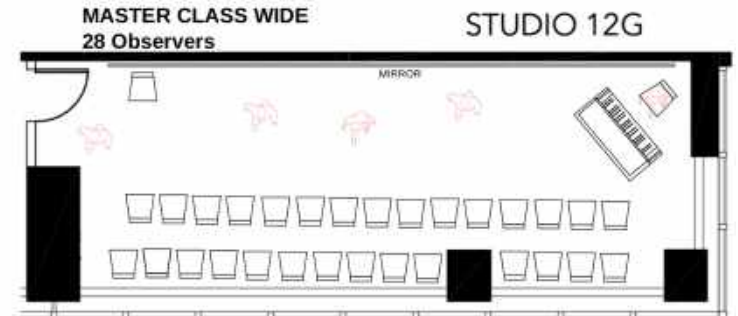
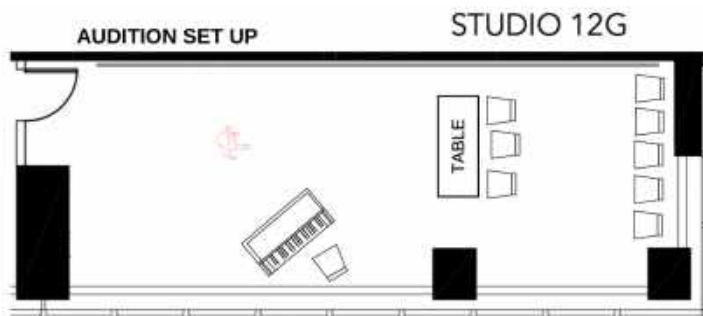
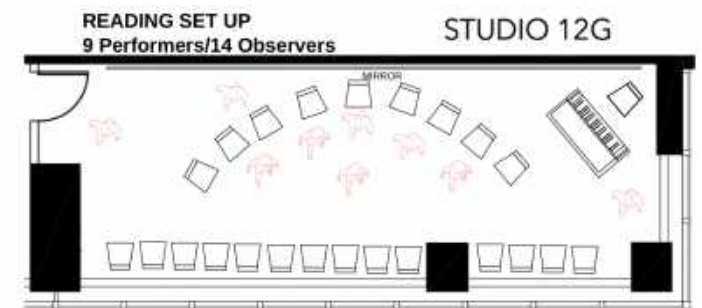
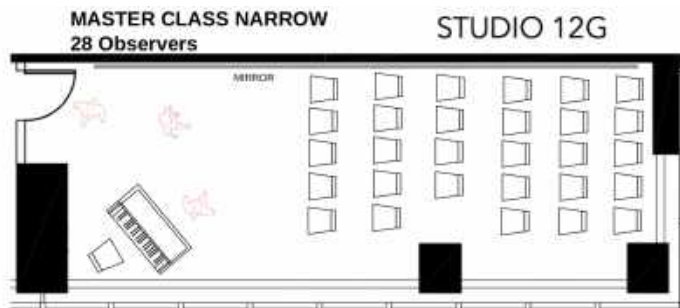
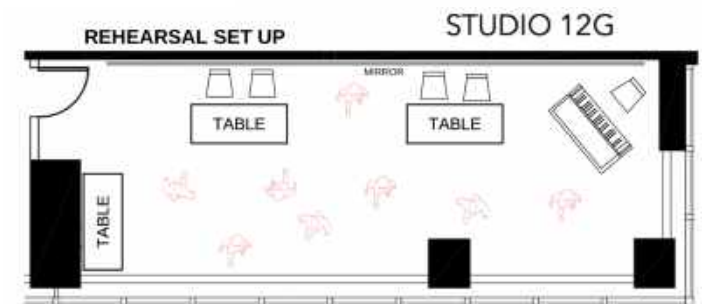
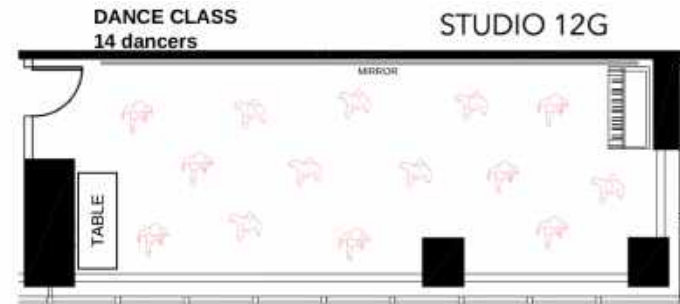
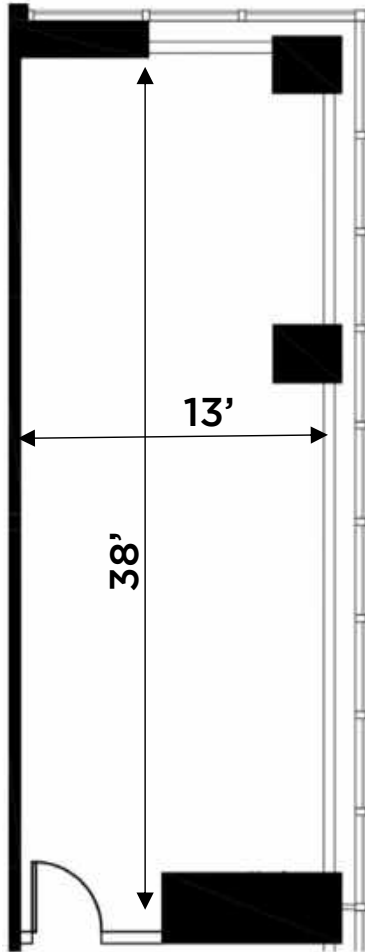
Music Stand: 1 (more upon request)

Sound Speaker: Samsung RS110A Bluetooth connectivity & Phone cable

STUDIO 12G



SAMPLE LAYOUTS



STUDIO 12G:

38' x 13' (494/sf)

Occupancy: 30

Upright Piano

Chairs: 25 (more upon request)

Tables: 2 6-foot tables

Music Stand: 1 (more upon request)

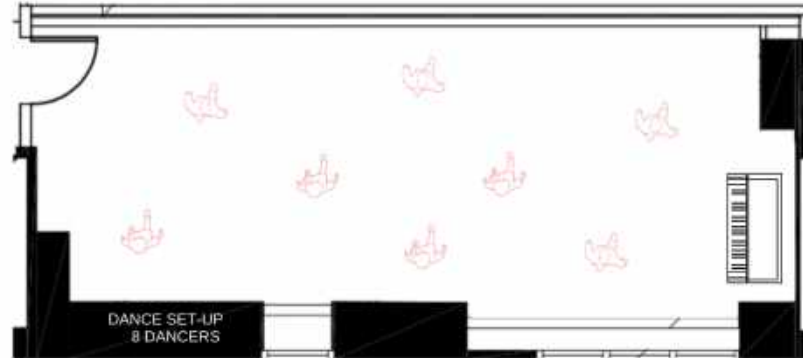
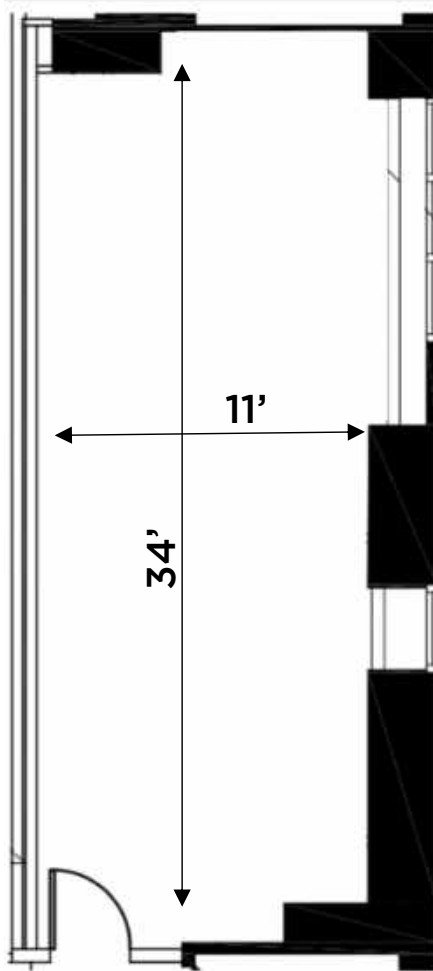
Sound Speaker: Samsung RS110A BlueTooth connectivity & Phone cable

STUDIO 12N

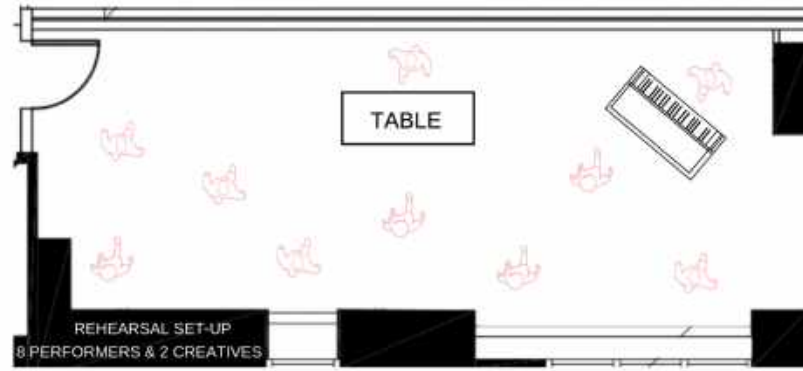
SAMPLE LAYOUTS



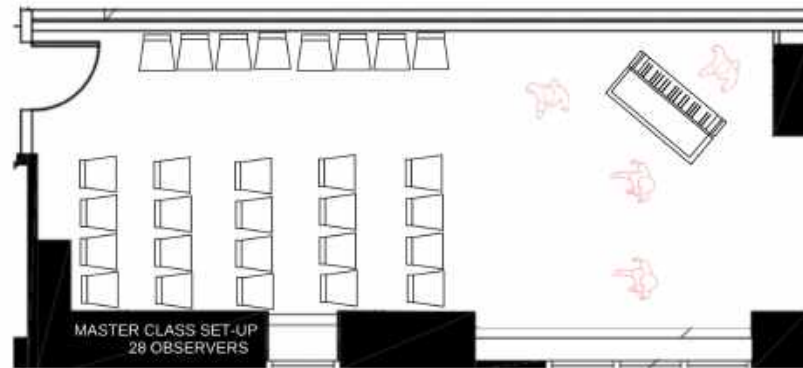
STUDIO 12N



STUDIO 12N



STUDIO 12N



STUDIO 12N:

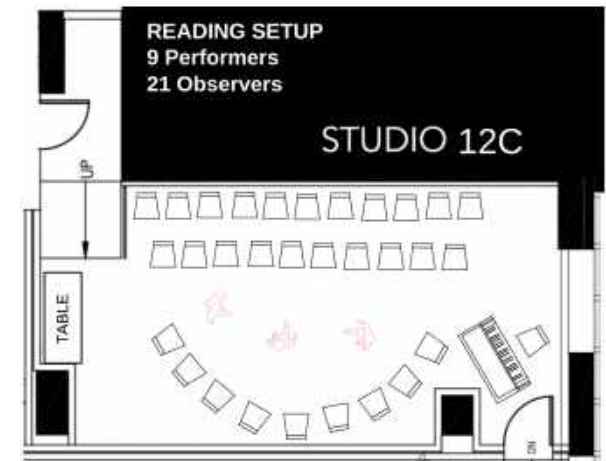
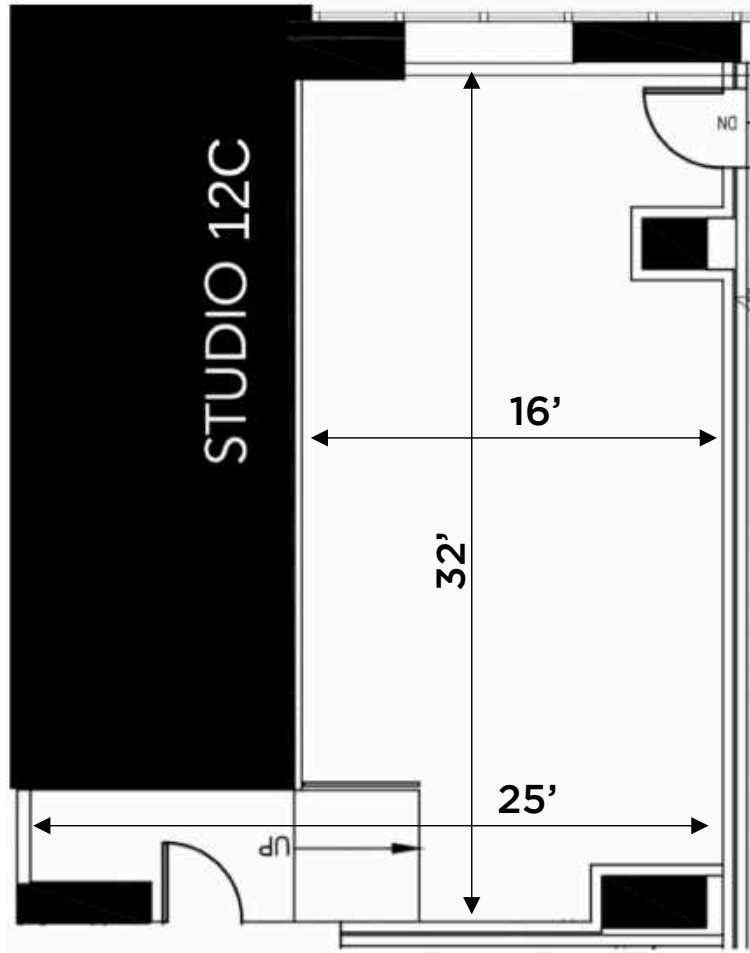
34' x 11' (374/sf)
Occupancy: 30
Vinyl cover
Upright Piano

SEE FLOOR PLAN FOR SPECIFIC DIMENSIONS AND LOCATIONS

STUDIO 11C/12C



SAMPLE LAYOUTS

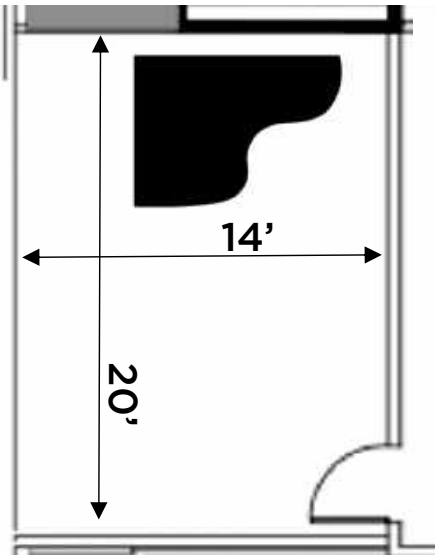


STUDIO 11C/12C:

34' x 11' (374/sf)
Occupancy: 30
Vinyl cover
Upright Piano

SEE FLOOR PLAN FOR SPECIFIC DIMENSIONS AND LOCATIONS

SMALL STUDIOS



STUDIO 12D

Carpeted Studios:

11H, 12E, 12H, 11i, 12i,
11K, 12K, Office Suite

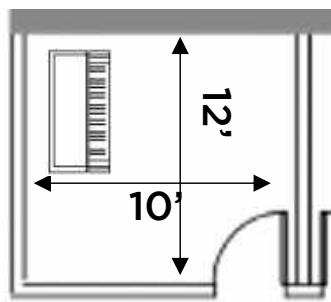
Vinyl Floors:

12D, 12F,

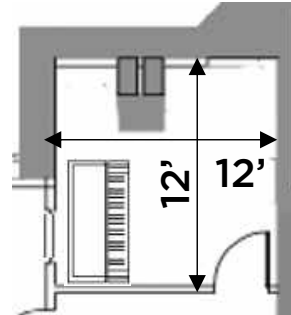
Self-Tape Studio: 12K

TV lighting
Tripod for camera
Backdrops
Speaker

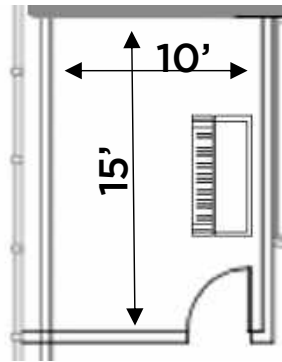
Baby Grand Piano: 12D



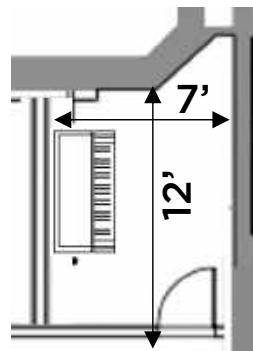
STUDIO 12E



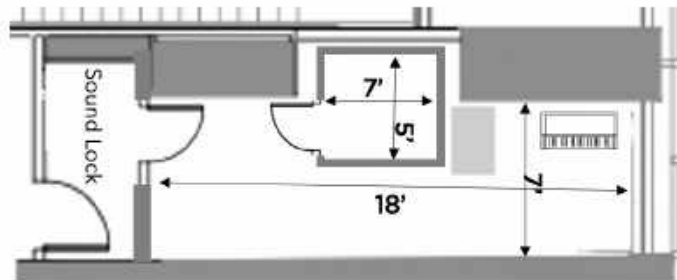
STUDIO 12H



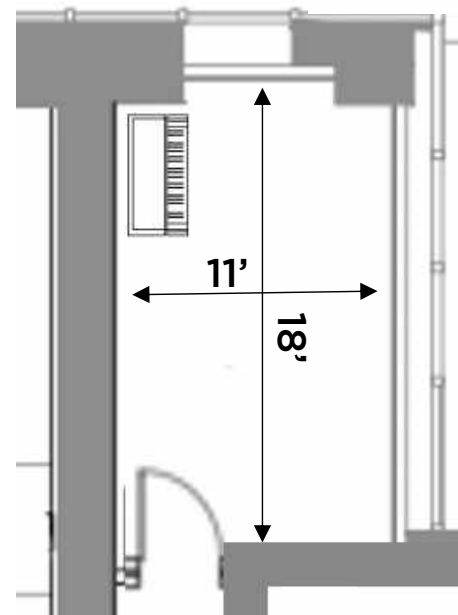
STUDIO 12F



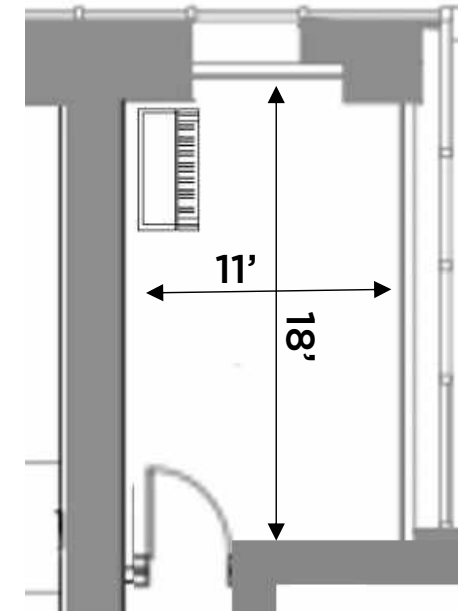
STUDIO 11H



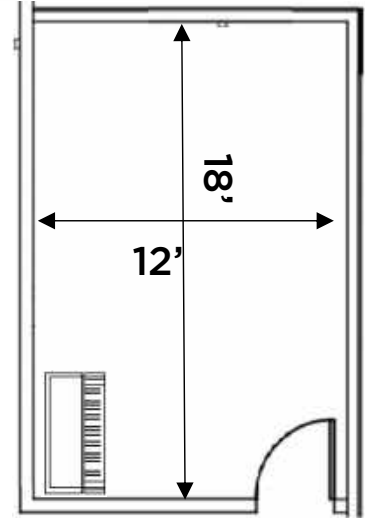
RECORDING SUITE



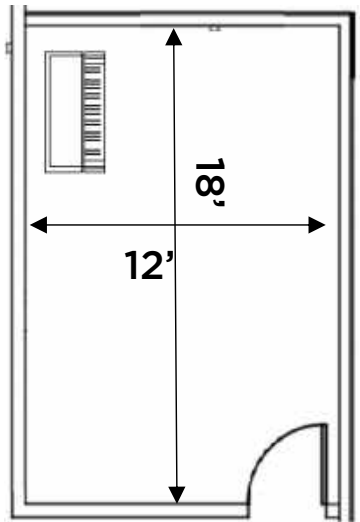
STUDIO 12i



STUDIO 11i

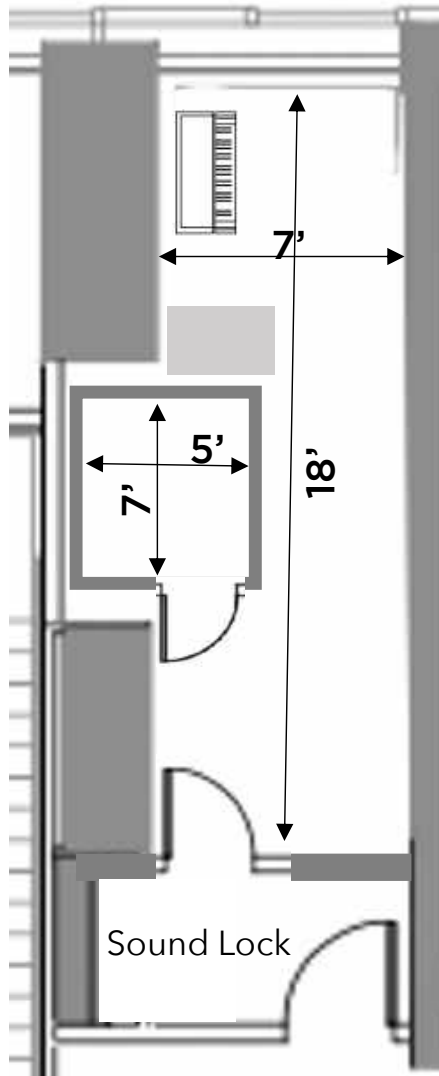


SELF-TAPE



STUDIO 11K

RECORDING STUDIO



ISOLATION BOOTH:

5' x 7' isolation booth with ventilation, interior lighting

Microphone: Neumann TLM102 (condenser mic)

Microphone: Shure SM7B (dynamic mic)

Microphone Stand: K&M 210/9 Telescoping Boom

Music Stand

Headphones: Beyerdynamic DT770 Pro 80ohm closed back

PRODUCTION DESK:

MacMini computer with ProTools & LogicPro license

Computer monitor w/ HDMI input

Universal Audio Volt 476 USB-C Audio Interface

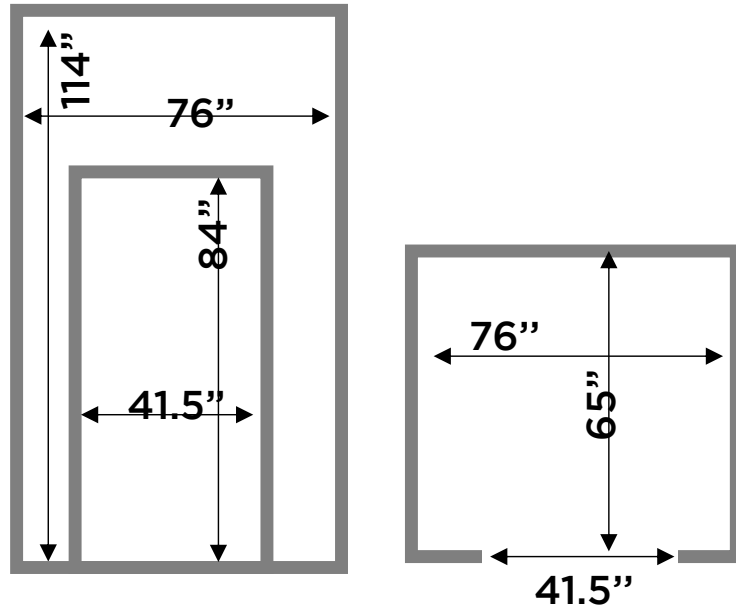
Beyerdynamic DT770 Pro 80ohm Closed Back Studio

Headphones

Electronic Keyboard: Upright Yamaha Piano

RECORDING STUDIO

FREIGHT ELEVATOR



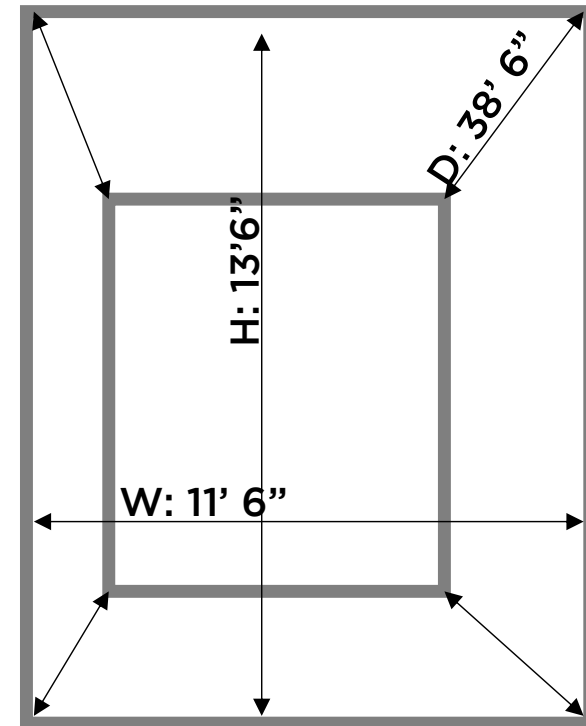
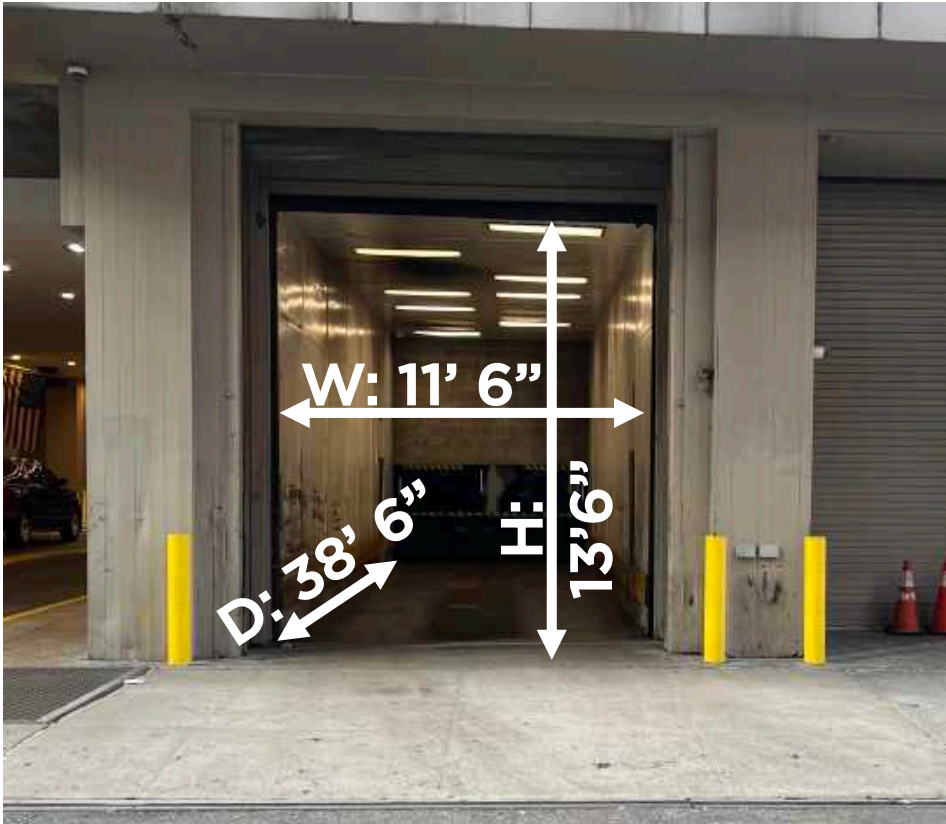
Freight Elevator:

Inside dimensions: 76"(w) x 65" (d) x 9'6" (ht). (325 cubic feet)

Door opening: 41.5" (w) x 7" high.

Longest dimension: corner to far opposite corner = 12' 6"

TRUCK ELEVATOR



Off street-loading dock: 30-foot box truck can take elevator to basement of building to unload, then transfer materials to freight elevator to transport to floor.

Truck Elevator (L:38' 6" W:11' 6" Ht:13' 6")
Available 24/7 (to be scheduled with the management).
Enter on 48th Street.

LOADING DOCK & STREET-SIDE LOAD-IN



Off street-loading dock: 30-foot box truck (12.5' high) takes elevator to basement of building to unload, then transfer materials to freight elevator to transport to floor.

Truck Elevator (L:38.5' W:11.5' Ht:13.5') Available 24/7 (to be scheduled with the management).

Freight Elevator:
Inside dimensions: 76"(w) x 65" (d) x 9'6" (ht). (325 cubic feet)
Door opening: 41.5" (w) x 7" high.

PRINTING: Scripts, Scores, Program Inserts

Bway Printing is a boutique service, addressing the **uniquely theatrical** printing needs of the Broadway community, located at Open Jar Studios.

We specialize in printing **scripts** and **scores**, to the highest level of perfection, at an affordable price, with speedy delivery within NYC. We are proudly the only company that will deliver your rehearsal materials **already stuffed in a binder**.

We provide support and expertise to every client, in a way not currently offered in the printing business. Owned and operated by Stage Managers and professionals who work on Broadway, Bway Printing are **experts in the proper formatting** of all theatrical documents, making us the ideal partner to ensure that your content is printed exactly the way you intended.

UNBEATABLE PRICING

B&W Scripts & Scores (8.5" x 11")

- Standard: \$0.10 /page
- Rush (24 hrs w/ advanced notice): \$0.15 /pg

Color Prints (8.5" x 11")

- Standard: \$0.28 /page
- Rush (24 hrs w/ advanced notice): \$0.33 /pg

Binders (Including project assembly)

- 1" view Binder: \$6.99 ea.
- 1-1/2" view binder: \$9.99 ea.

If you have your own binders you wish to re-use, we are happy to assemble them for you: \$2.00 ea. assembly fee

Note: To ensure perfect alignment within your binder, we print scripts and scores directly on 3-hole paper.



Think of it this way... You are doing a reading of a new musical, and need 25 scripts (100 pages), and 20 scores (100 pages). With Bway Printing your order would be \$450. That's **44% cheaper than our competitors**, and while on par with popular nationwide office stores, our industry expertise and delivery service are unmatched.

BWAYPRINTING.COM

BWAY PRINTING is housed at OPEN JAR STUDIOS
(48th Street @ Bway)

1601 Broadway - 11th Floor, NY, NY 10019



WHO PRINTS WITH BWAY PRINTING?



Program Inserts (includes precision laser cut)

Printing prices as above for printing, plus:

- \$0.01/cut per page

How to calculate:

- 2 inserts/pg = \$0.01/pg (1 cut)
- 3-4 inserts/pg = \$0.02/pg (2 cuts)
- 5-6 inserts/pg = \$0.03/pg (3 cuts)

For example:

If you have a format of 2 inserts on the page, you'd pay \$0.10 for the black and white printed page and \$0.01 for the cut = \$0.11/pg (or 1,200 inserts for \$66).

Delivery FREE in Manhattan between 34th & 59th St / 6th Ave & 10th Ave. (Outside zone: \$50. Outside Manhattan: \$150)

FREE Delivery for orders \$250+.

Orders under \$250 can be picked up for FREE (or delivered for \$50).

